

CERIO Corporation

100GX-N

eXtreme Power 11n 2.4Ghz 1x1 Wireless Access Point (800mW)

Quick Start Guide

Table of Contents

1. Overview.....	3
2. Package Content.....	3
3. Hardware Specifications.....	4
4. Panel Function Description.....	6
5. Mounting Installation.....	7
6. Power Connector.....	9
7. Software Configuration.....	9

1. Overview

The **CERIO 100GX-N eXtreme High Power 11n 150Mbps** In Wall PoE Access Point is an easy-to-install and cost-effective solution for most of indoor wireless deployments, The high class access point perfect for installation including ;hotel , offices, Luxurious house.

To extend the range and increase the performance of our wireless network. The 100GX-N provide both a RJ-45 wired connection as well as WiFi wireless connection and provide RJ11 Pass-through function , Build in stable 's Cerio Cen-OS 3.0 own software ,a network administrator can centrally manage the 100GX-N via a Web browser an SNMP MIB browser & VLAN tag. With included PoE, power and data are supplied to the unit using CAT5 Ethernet cable. , It use be powered via PoE switch or PoE Injector available.

The Ethernet port support Link-On and Cable Length Power Saving and Link-Down Power Saving also when PoE is not available. The 100GX-N Structure (Form Factor) with bundle US or EU type faceplate set to support In wall Mounting make up and install.

All supports four operational modes, the Pure AP with WDS mode / Pure WDS mode / Client Bridge + Universal Repeater Mode and WISP Repeater +AP mode etc. respectively with built-in remote management features simplify the deployment and reduce cost for continued maintenance of the indoor Access Point .This eXtreme High Power 11n 150Mbps PoE Access Point must be your best choice.

2. Package Content

IW-100GX-N Packages

100GX-N Main Unit	x1
RJ-45 UTP Cable	x1
In Wall Faceplate Set - 1 (U.S.A Specification)	x1
In Wall Faceplate Set - 2 (Europe Specification)	x1
Wall Mounting Bracket Set	x1
CD Manual	x1
Quick Installation Guide	x1
Warranty Card	x1

WM-100GX-N

100GX-N Main Unit	x1
RJ-45 UTP Cable	x1
Power Adapter (Power Supply)	x1
PoE Adapter	x1
Stand/Mounting Bracket	x1
CD Manual	x1
Quick Installation Guide	x1
Warranty Card	x1

3. Hardware Specifications

Hardware Specifications

Standards Conformance	IEEE 802.11 b/g/n compliant IEEE 802.3 / IEEE 802.3u IEEE 802.3af Power over Ethernet IEEE 802.11i Preauth (PMKSA Cache) IEEE 802.11d Multi country roaming IEEE 802.1Q Tag VLAN IEEE802.11f IAPP IEEE802.11e WMM
Ethernet Configuration	10/100BASE-TX auto-negotiation Ethernet RJ-45 connector) ; Auto MDI/MDI-X WAN * 1 , LAN * 1
Telephone Configuration	RJ-11 Pass Through In x1 connector , Out x1 connector
LED Indicators	(Power / Network Access) LED x 1,

Wireless Specifications

Data Transfer Rate	IEEE802.11b : 1 / 2 / 5.5 / 11Mbps (auto sensing) IEEE801.11g : 6/ 9/ 12/ 18/ 24/ 36/ 48/ 54Mbps IEEE802.11n : 150Mbps (Tx), 150Mbps (Rx)
Frequency Range	2.412 ~ 2.462GHz (USA) 2.412 ~ 2.484GHz (Japan) 2.412 ~ 2.472GHz (Europe ETSI) 2.457 ~ 2.462 GHz (Spain) 2.457 ~ 2.472 GHz (France)

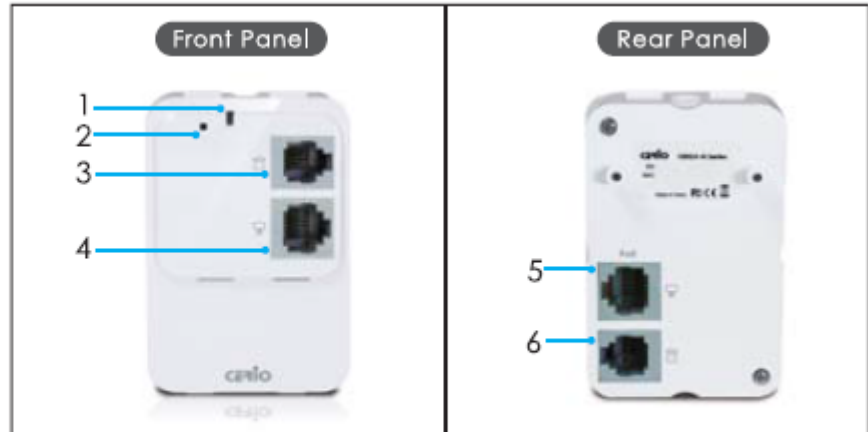
Channel Spacing	IEEE802.11b/g/n : 20/40MHz
Media Access Protocol	CSMA / CA with ACK
Modulation Method	IEEE 802.11b: DSSS (DBPK,DQPSK,CCK) IEEE 802.11g/n: OFDM (64-QAM,16-QAM,QPSK,BPSK)
Operating Channels	IEEE 802.11b/g/n:
Transmit Power Variation	Max : 29 ± 1 dBm
Receiver Sensitivity	Max : -96dBm

Environmental & Mechanical Characteristics

Operating Temperature	-25 °C ~ 55 °C
Storage Temperature	-25 °C ~ 65 °C
Operating Humidity	
Storage Humidity	5% to 90% Non-Condensing
Antenna	Build in 1x 2.5dBi RF Antenna
Form Factor	Wall / In Wall
System Power Consumption	8 Watt Max.
Input Power Require	803.3af 48V PoE Ethernet Interface Power In
Dimensions (W x H x D)	Main Unit : 52 x 76.2 x 35mm Faceplate Set : 70 x120x10 mm(US-Type) Faceplate Set : 86 x 88 x10 mm(EU-Type)
Unit Weight	72.5g
Certifications	CE , FCC , NCC , BSMI , ROHS compliant

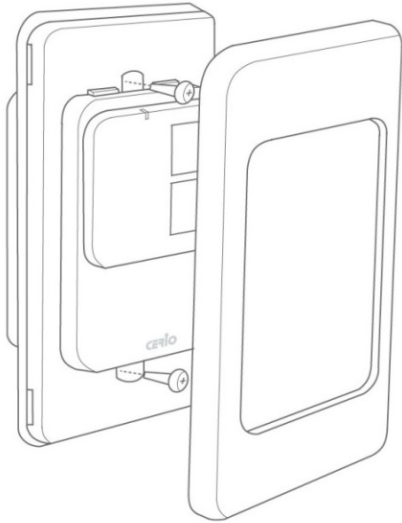
4. Panel Function Description

Panel Function Descriptions

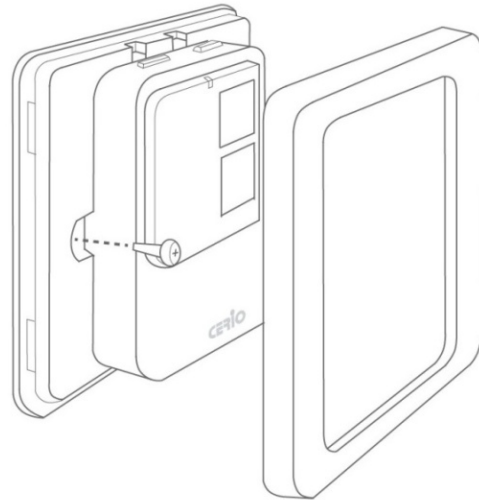


- 1. Power/ WLAN:**
LED ON indicates power on, and OFF indicates power off. LED FLASH indicates Wireless ON, and FLASH quickly indicates Wireless Transmit quickly.
- 2. Reset Button:**
Press and hold the Reset button for more than 10~15 seconds to reset the system to default configurations.
- 3. PHONE Line OUT Port:**
RJ-11 cable into the LINE port on the 100GX-N, and then plug the other end into your phone .
- 4. LAN Ethernet port:**
This port is a Local LAN port that authentication is not required for clients to access network via this port.
- 5. LAN Port(PoE):**
Connect one end of your Ethernet cable into the LAN(PoE) port on the 100GX-N and the other end into on a PoE Switch or PoE Injector.
- 6. PHONE Line IN Port:**
Connect the Modem interface of a splitter using a telephone cable.

5. Mounting Installation

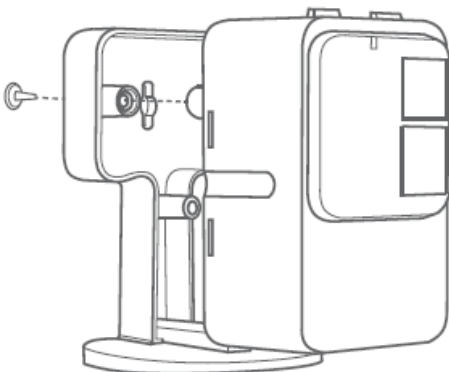


Main Unit with US-Type Faceplate Module
(U.S.A. / Japan Specification)



Main Unit with EU-Type Faceplate Module
(Europe / China Specification)

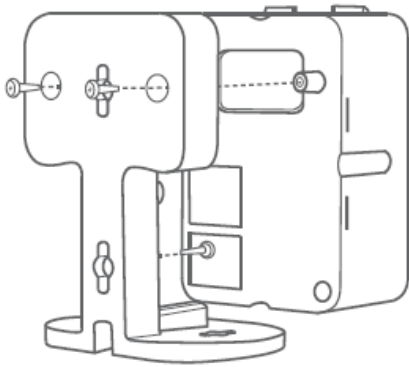
Desktop Stand



Step 1: The 100GX-N placed on the Stand/Mounting Bracket.

Step 2: Attach the remaining screws securely to the back of the 100GX-N.

Wall Mounting

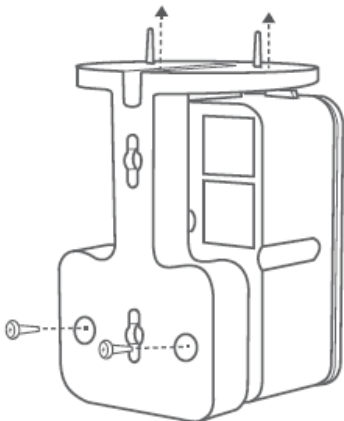


Step 1: Attach the remaining screws securely to the back of the 100GX-N.

Step 2: Use the provided screws to secure the mounting bracket on the wall.

Step 3: Attach the 100GX-N to the mounting bracket.

Ceiling Mounting

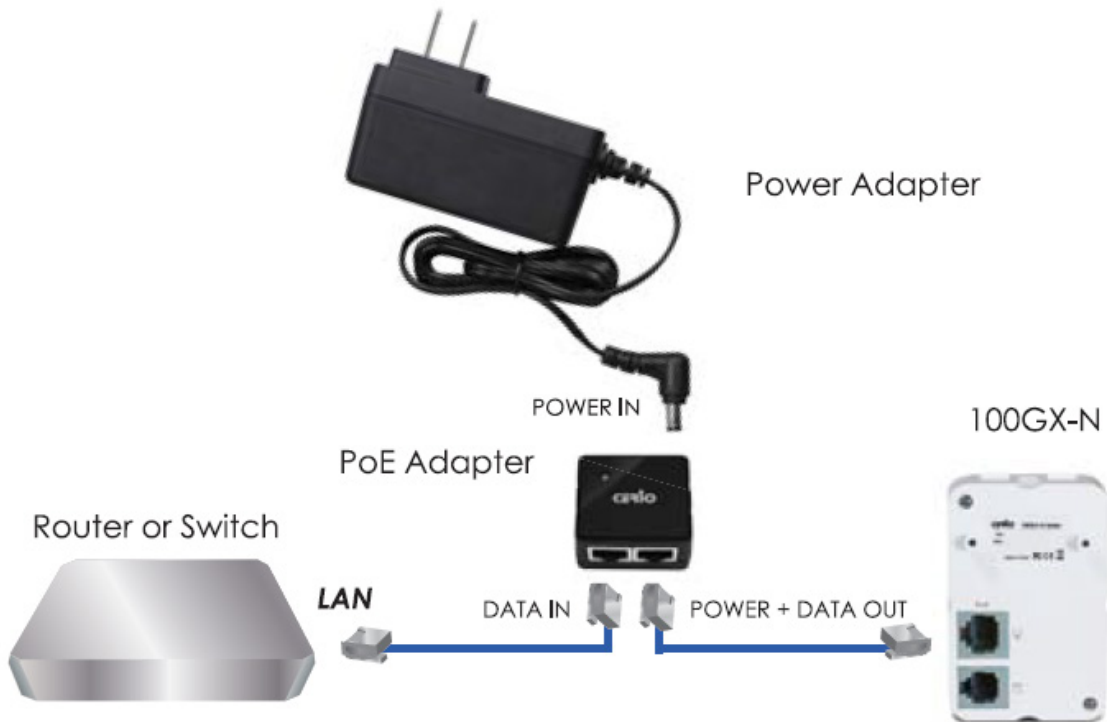


Step 1: Attach the remaining screws through the holes at the base of the bracket securely to the back of the 100GX-N.

Step 2: Use the provided screws to secure the mounting bracket on the Ceiling.

Step 3: Attach the 100GX-N to the ceiling.

6. Power Connector

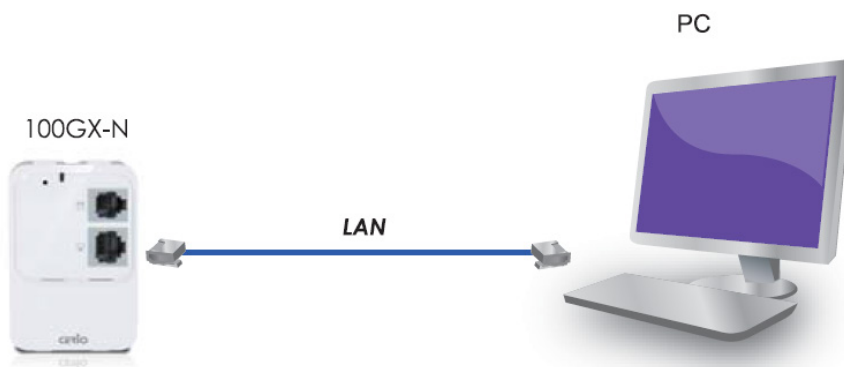


7. Software Configuration

Example of Segment: (Windows 7)

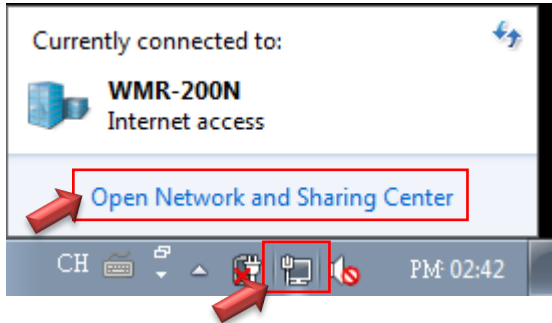
IP Segment Set-up for Administrator's PC/NB

Set the IP segment of the administrator's computer to be in the same range as 100GX-N for accessing the system. Do not duplicate the IP Address used here with IP Address of 100GX-N or any other device within the network.



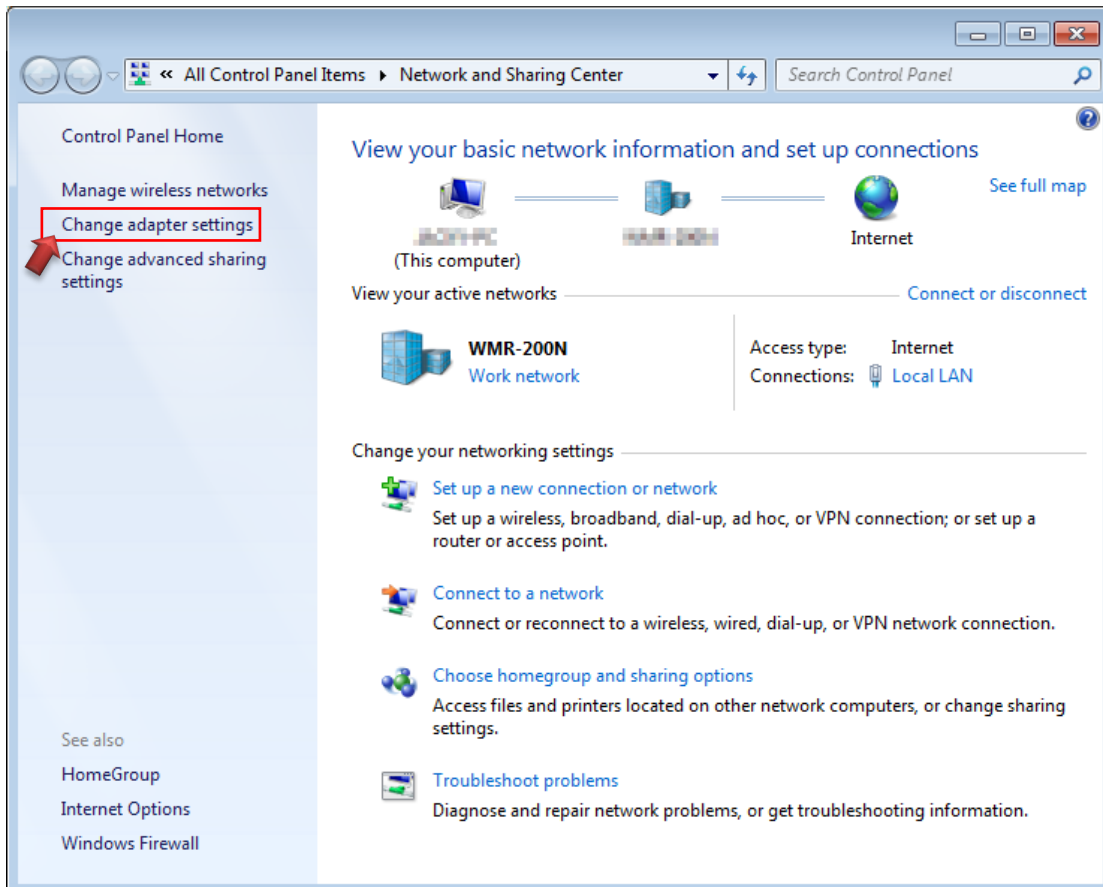
Step 1 :

Please click on the computer icon in the bottom right window, and click “Open Network and Sharing Center”



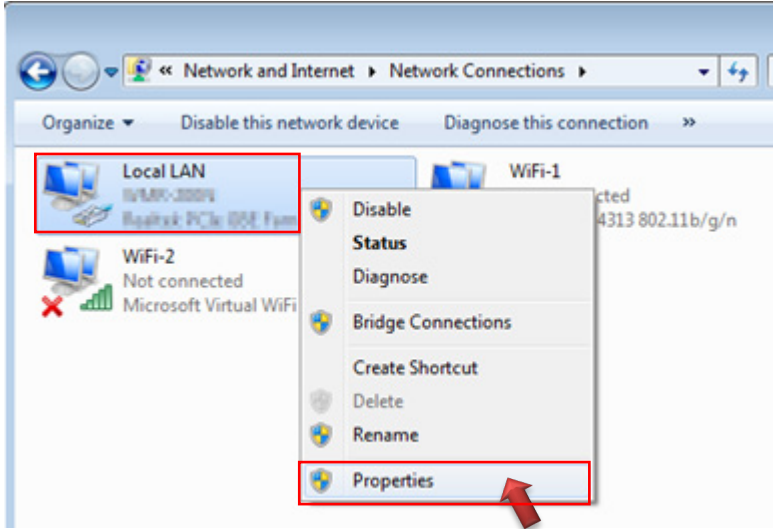
Step 2 :

In the Network and Sharing Center page, Please click on the left side of “Change adapter setting” button



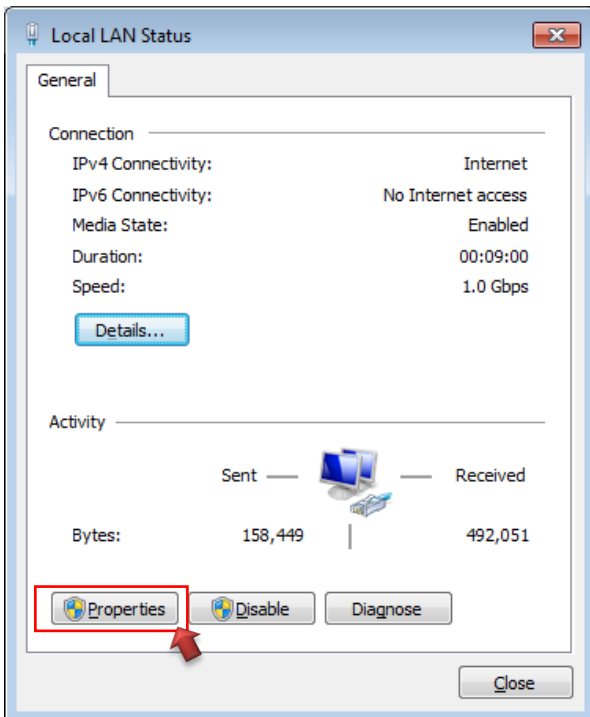
Step 3 :

In “Change adapter setting” Page. Please find Local LAN and Click the right button on the mouse and Click “Properties”



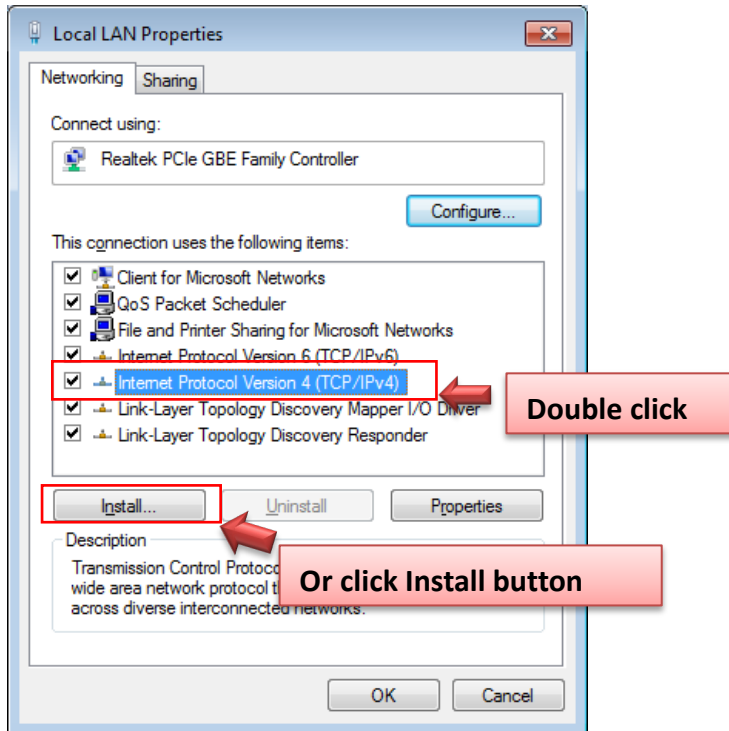
Step 4 :

In “Properties” page, please Click “Properties” button to TCP/IP setting



Step 5 :

In Properties page to setting IP address, please find “Internet Protocol Version 4 (TCP/IPv4)” and double click or click “Install” button.



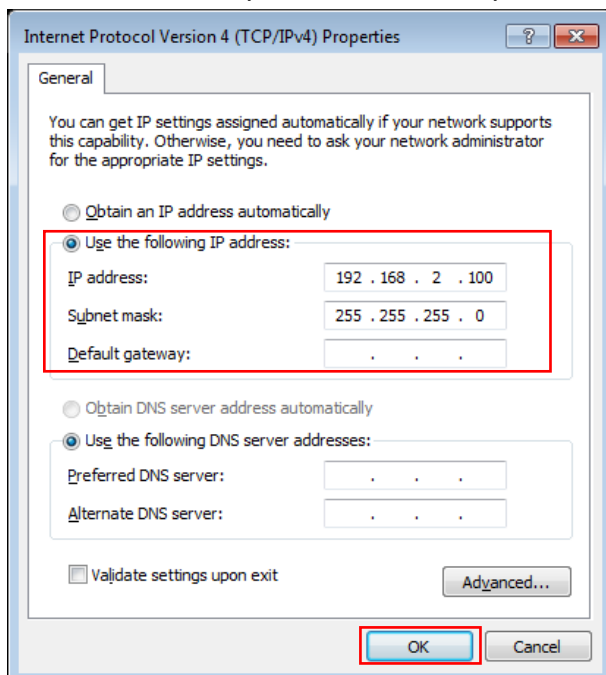
Step 6 :

Select “Use the following IP address”, and fix in IP Address : 192.168.2.#

ex. The # is any number by 1 to 253

Subnet mask : 255.255.255.0

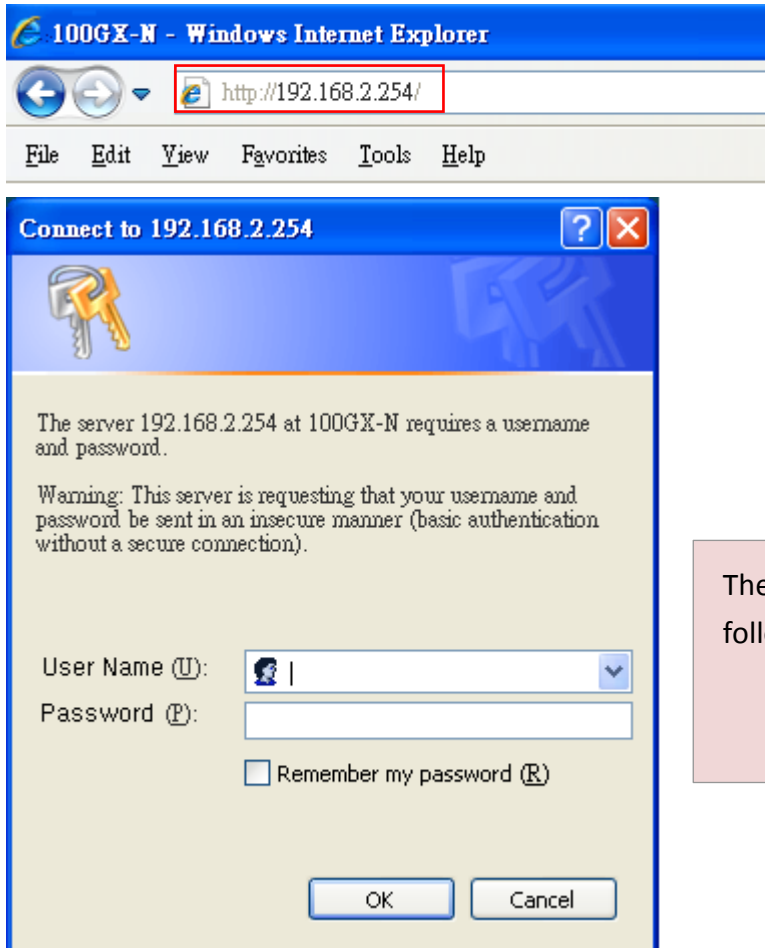
And Click "OK" to complete the fixed computer IP setting



Step 7 :

Open Web Browser

Launch as web browser to access the web management interface of system by entering the default IP Address, http://192.168.2.254, in the URL field, and then press Enter. Browser will pop up "login" page. Please key in username and password into the system on 100GX-N.



The 100GX-N system login default As follows
 User Name : **root**
 Password : **default**

The system manager Login Page then appears. Enter “**root**” as User name and “**default**” as Password, and then click “**OK**” to login to the system.

Login information

By CenOS3.0 Software	Router / AP / WDS/Client Bridge + Repeater AP/ WISP+ Repeater AP mode
Default IP Address	192.168.2.254
Account	root
Password	default

By CenOS4.0 Software	AP / Client Bridge + Repeater AP mode	
Default IP Address	192.168.2.254	
Account	root	
Password	default	

Please base your Software version check to GS CenOS3.0 or NGS CenOS4.0 Users Manual