

CERIO Corporation

CW-400NAC

**eXtreme Power AC1200 2.4GHz / 5GHz 2x2
Ceiling / Wall PoE Access Point (800mW)**

Quick Start Guide

1. Overview.....	3
2. Product Outward Appearance.....	3
3. Panel Function Description.....	4
4. LED Explanation.....	5
5. Mounting Installation.....	5
6. Uninstallation for Mounting kit.....	6
7. Software Configuration.....	7
8. Login CW-400NAC Web Page.....	11

1. Overview

The **CW-400NAC eXtreme Power AC1200 2.4GHz / 5GHz 2x2 Ceiling / Wall PoE Access Point** is an AC1200 Wireless concurrent dual band wifi device. CW-400NAC **bundles Cerio CenOS 3.0 Software Core** and supports Cerio Wireless Management Software (CWMS), enabling connection to Wireless Indoor Networks for service providers deploying last mile services to home, businesses, and residential broadband subscribers. Network administrators can create and centrally manage multiple subscriber service tiers using per-subscriber rate limiting features. The CW-400NAC Structure (Form Factor) supports both Ceiling and Wall mounting.

The **CW-400NAC eXtreme Power AC1200 2.4GHz / 5GHz 2x2 Ceiling / Wall PoE Access Point** hardware utilizes 800mW (2.4GHZ) / 500mW (5GHZ) eXtreme power and **built-in 2x2 Dual-Band Omni directional antennas**. The CW-400NAC Dual Band Wireless Access Point hardware with **Cerio CenOS 3.0 software may utilize CERIO's CWMS management software** to better organize and manage a network infrastructure. CW-400NAC can also provide subscribers with an Ethernet connection for a local access to extend the range and increase the performance of a wireless network. CW-400NAC hardware also includes **802.3af PoE** capabilities that allows power and data to be supplied to the unit using CAT5 Ethernet cable.

2. Product Outward Appearance

Product Front



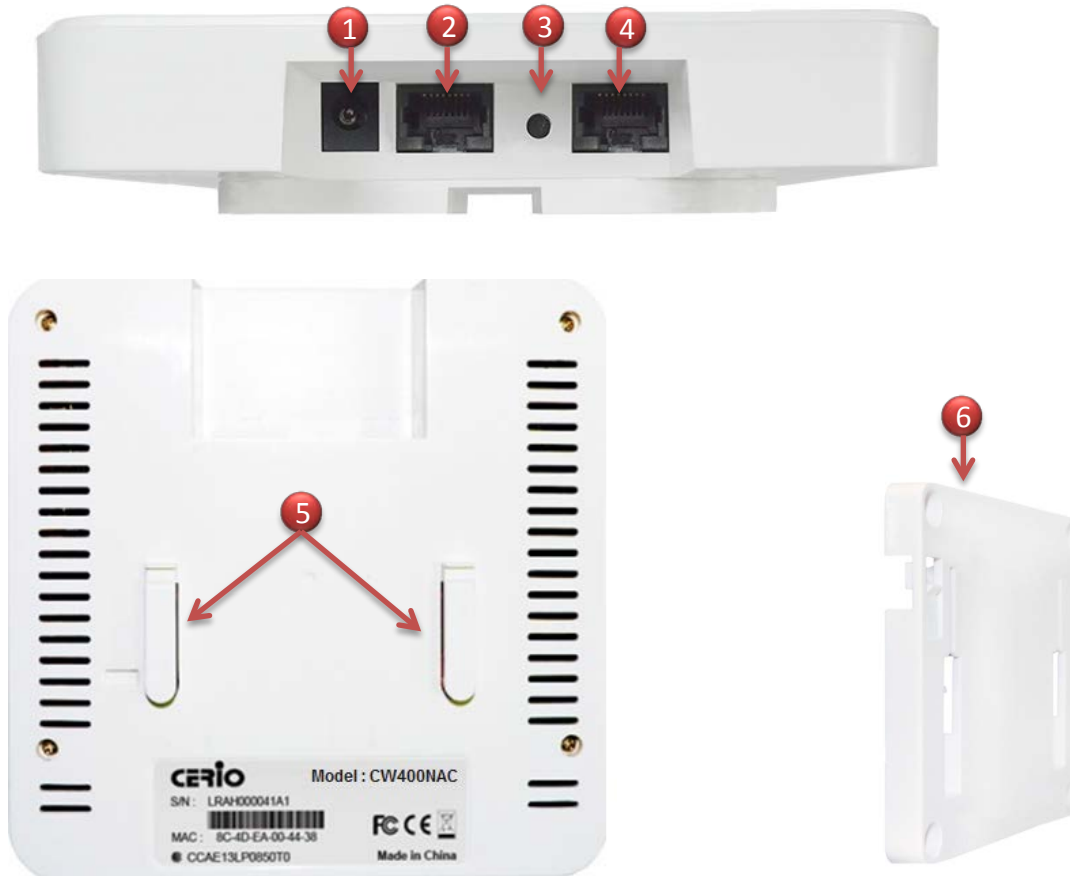
Product Reverse side



Product Side

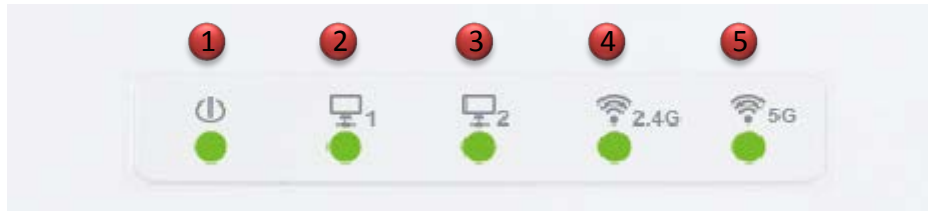


3. Panel Function Description



1. 12V / 1A DC input power (The power adapter by optional)
2. The Ethernet connect by Ethernet2 Port, Support PoE Bridge function.
3. Reset button (Please press and hold for about 15 seconds and then release)
4. The Ethernet connect by Ethernet1 Port, Support PoE in.
5. Mounting Clips.
6. Mounting Bracket

4. LED Explanation

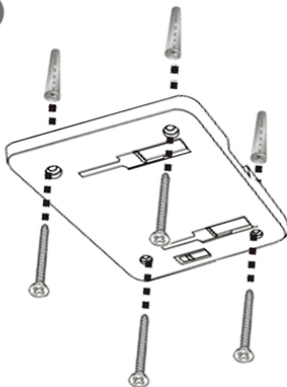


- (1) Power LED
- (2) RJ-45 Ethernet LED of the LAN1 connection
- (3) RJ-45 Ethernet LED of the LAN2 connection
- (4) 2.4G Wi-Fi LED
- (5) 5G Wi-Fi LED

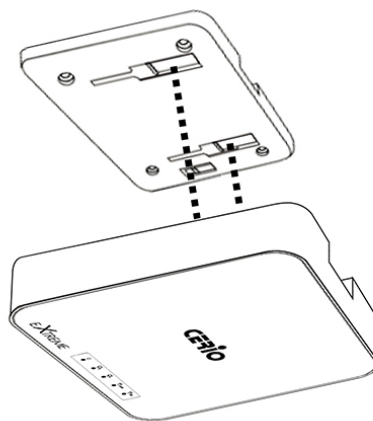
5. Mounting Installation

Ceiling Mount

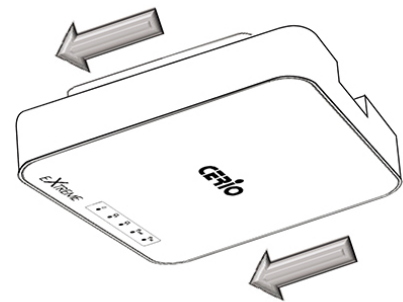
1



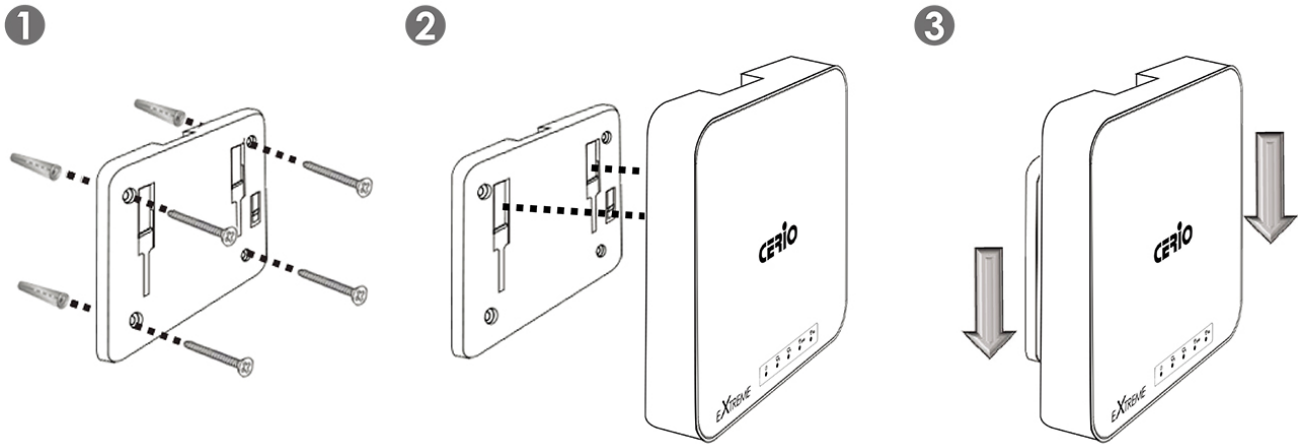
2



3

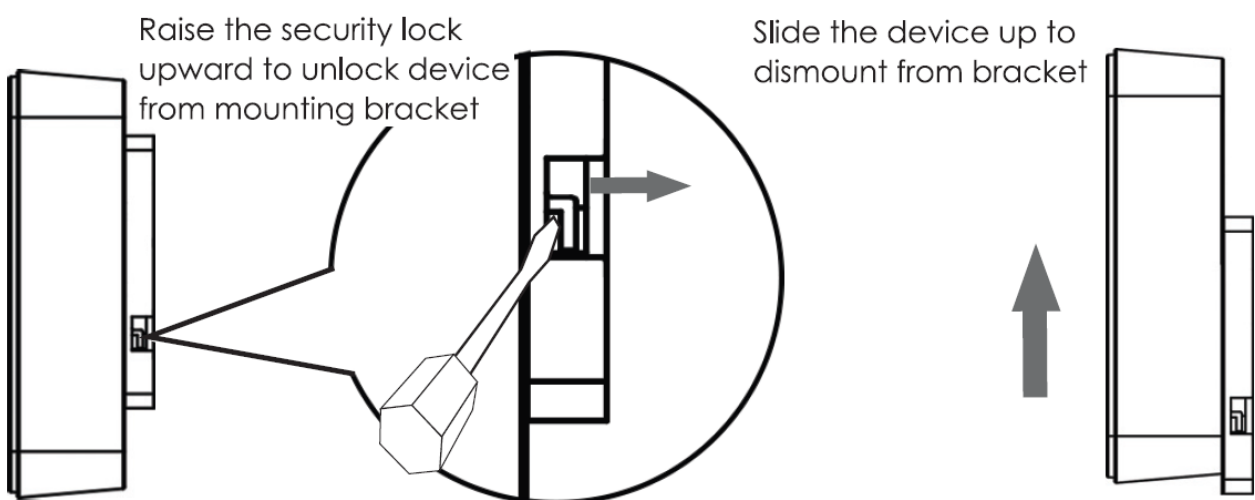


Wall Mount



1. Position the Mounting Bracket in the desired location. Use the screws and anchors in the mounting kit to secure the bracket into position.
2. Align the device with the mounting Hinges on the bracket. Ensure that the mounting clips fit correctly into each slot.
3. Slide the CW-300N down until the device is locked into place.

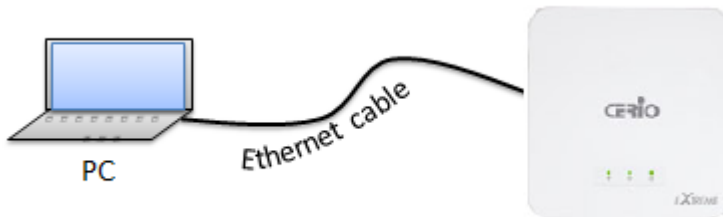
6. Uninstallation for Mounting kit



7. Software Configuration

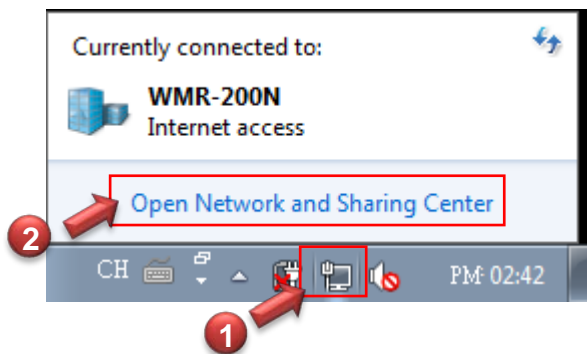
PC link to device setup by OS Windows7

Please PC link to Device used cat5/6 Ethernet cable.



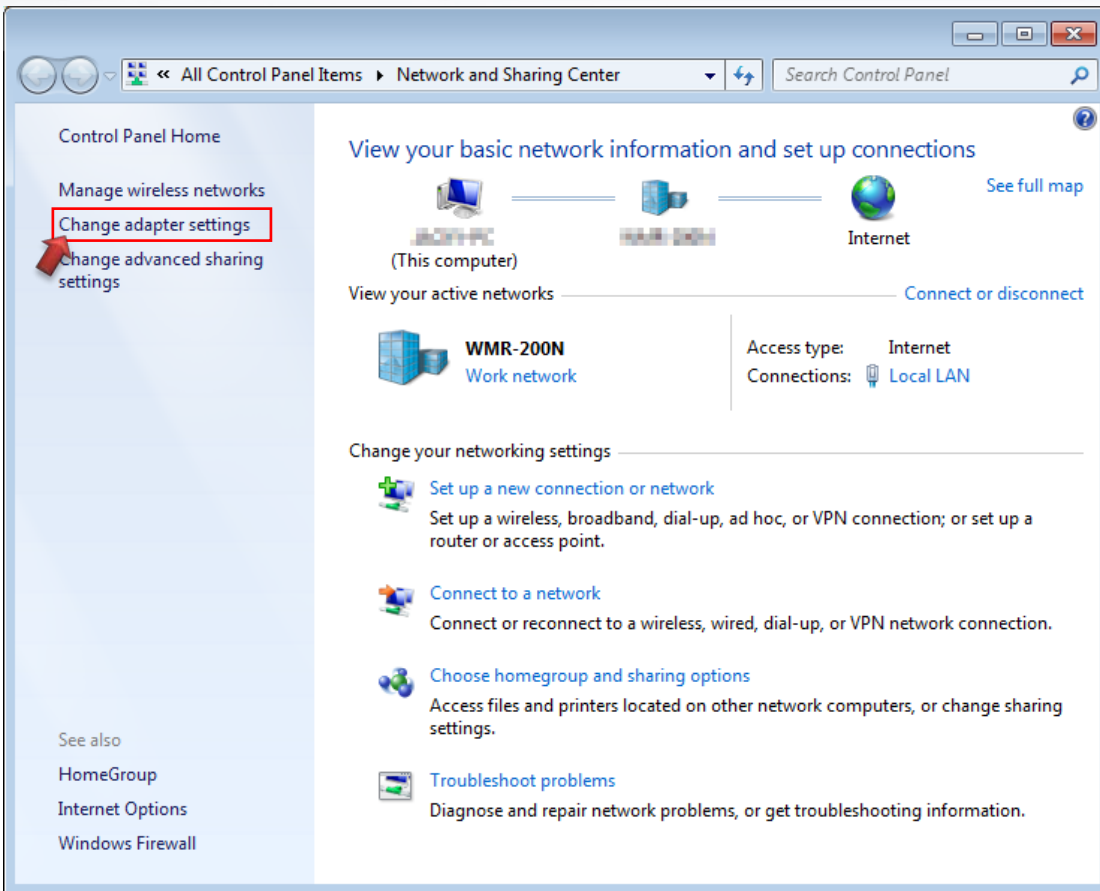
Step 1 :

Please click on the computer icon in the bottom right window, and click **“Open Network and Sharing Center”**



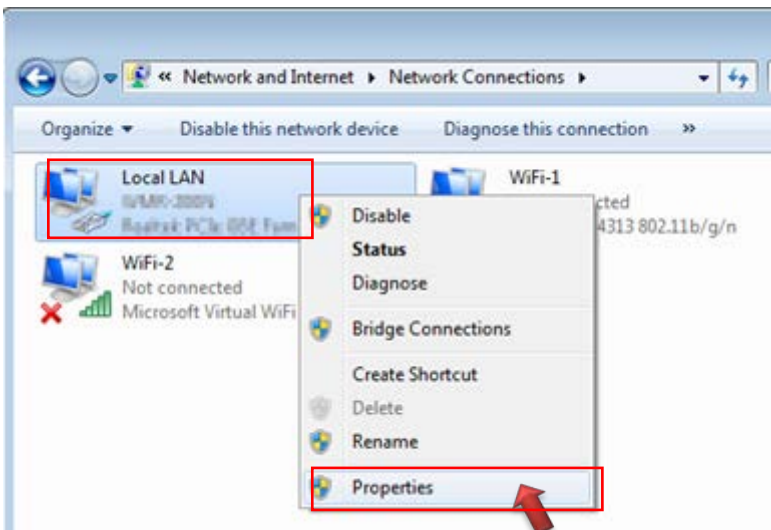
Step 2 :

In the Network and Sharing Center page, Please click on the left side of **“Change adapter setting”** button



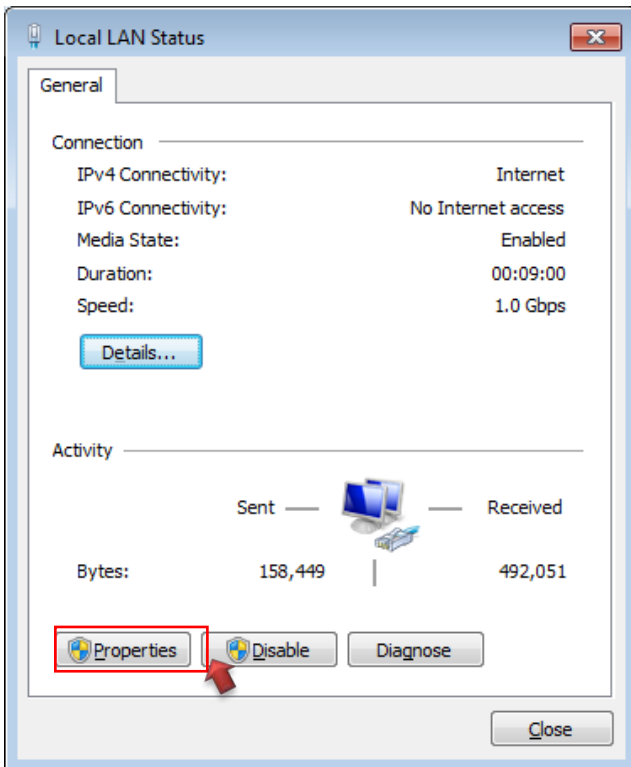
Step 3 :

In “**Change adapter setting**” Page. Please find Local LAN and Click the right button on the mouse and Click “**Properties**”



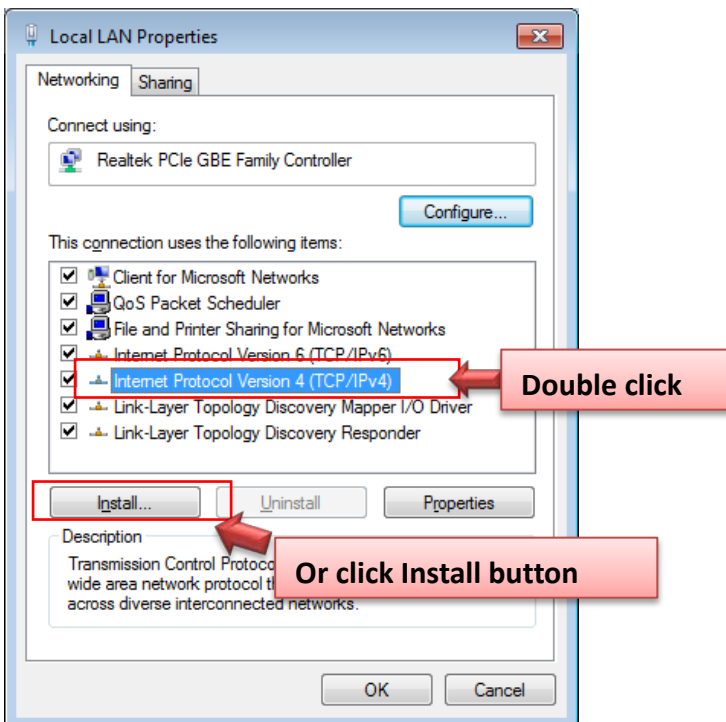
Step 4 :

In “**Properties**” page, please Click “**Properties**” button to TCP/IP setting



Step 5 :

In Properties page to setting IP address, please find “**Internet Protocol Version 4 (TCP/IPv4)**” and double click or click “**Install**” button.

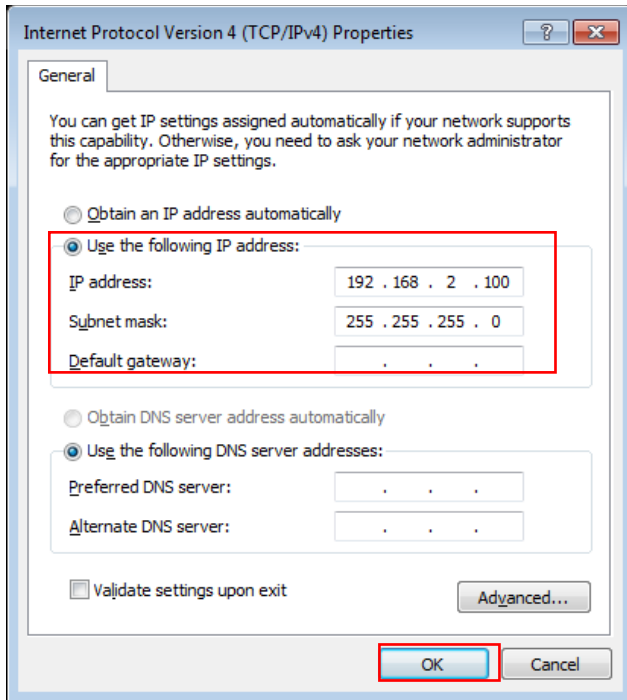


Step 6 :

Select **"Use the following IP address"**, and fix in IP Address : 192.168.2.#
ex. The # is any number by 1 to 253

Subnet mask : 255.255.255.0

And Click **"OK"** to complete the fixed computer IP setting



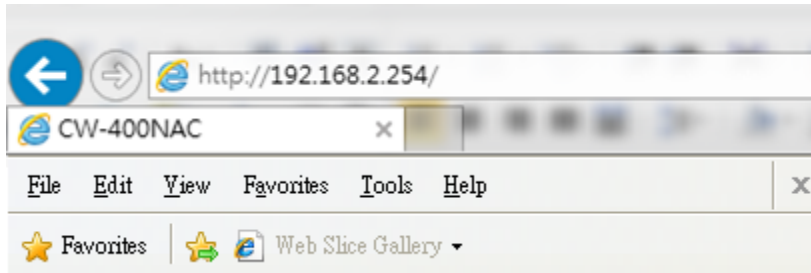
Please Open Web Browser

Without a valid certificate, users may encounter the following problem in IE7 when they try to access system's WMI (<https://192.168.2.254>). There will be a "Certificate Error", because the browser treats system as an illegal website.

8. Login CW-400NAC Web Page

Launch Web Browser

Launch as web browser to access the web management interface of system by entering the default IP Address, <http://192.168.2.254/>, in the URL field, and then press Enter.



System Login



Please use default Users name: “**root**” and default password “**default**” to login.