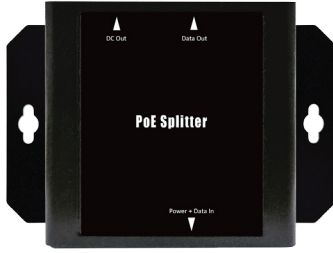


# POE-PD04S-12V

10/100/1000M/Multi Gigabit 802.3at Class4 to DC12V Protective Isolation PoE Splitter



## User's Guide

### FCC Certifications

This Equipment has been tested and found to comply with the limits for a Class A digital device, pursuant to part 15 of the FCC Rules. These limits are designed to provide reasonable protection against harmful interference when the equipment is operated in a commercial environment. This equipment generates, uses, and can radiate radio frequency energy and, if not installed and used in accordance with the instruction manual, may cause harmful interference to radio communications.

Operation of this equipment in a residential area is likely to cause harmful interference in which case the user will be required to correct the interference at his own expense.

This device complies with Part 15 of the FCC Rules. Operation is subject to the following two conditions: (1) this device may not cause harmful interference, and (2) this device must accept any interference received, including interference that may cause undesired operation.

### CE Mark Warning

This equipment complies with the requirements relating to electromagnetic compatibility, EN 55022 class A for ITE, the essential protection requirement of Council Directive 89/336/EEC on the approximation of the laws of the Member States relating to electromagnetic compatibility.

Company has an on-going policy of upgrading its products and it may be possible that information in this document is not up-to-date. Please check with your local distributors for the latest information. No part of this document can be copied or reproduced in any form without written consent from the company.

Trademarks:  
All trade names and trademarks are the properties of their respective companies.  
Copyright © 2016, All Rights Reserved.

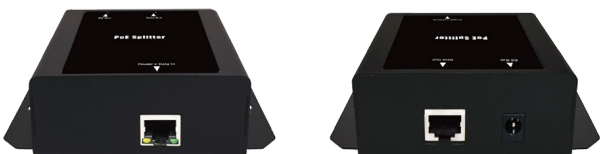
## Unpacking Information

Thank you for purchasing our PoE series products. Before installation, please check that your package contains the following items.

Open the shipping cartons of the splitter and carefully unpack its contents. The carton should contain the following items:

1. POE-PD04S-12V Main Unit x 1
2. Inside diameter 2.1mm(PHY) to 2.1mm DC Cable x 1
3. Warranty Card x 1
4. Quick Installation Guide x 1

### Hardware Overview

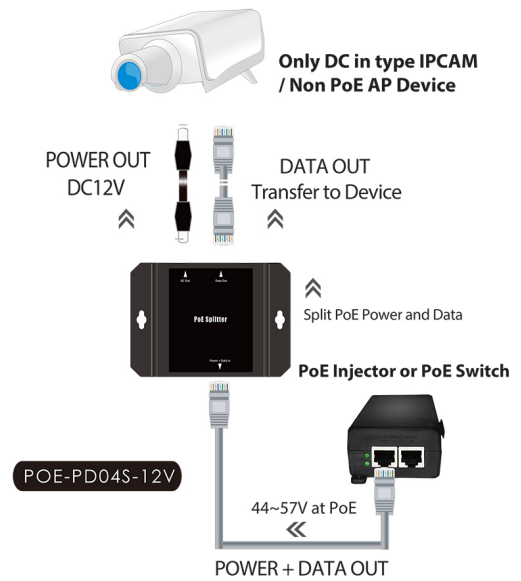


- Wall Mount Holes
- POWER + DATA IN
- DATA OUT
- 12V DC JACK Power OUT

## Introduction

POE-PD04S-12V is designed to run Multi Gigabit speed PoE cables over long distances. This device splits the PoE signal into separate data and power sources and relays them into non-PoE devices. Supports DC output voltage 12V with isolation protection. Using the PoE Splitter, you can take Wireless AP / IP Cameras / VoIP Phone where power outlets are not readily available. It delivers Power over Ethernet to remote devices. The PoE Splitter can be used to complement any 802.3at PoE+ / 802.3af PoE switch, Proprietary injector unit to provide small to medium-sized businesses with a complete end-to-end PoE solution.

## Product Application



## PoE Splitter for split 12V Power & Data

### Highlight Features

- Complying with IEEE 802.3 10Base-T, IEEE 802.3u 100Base-TX, IEEE 802.3ab 1000Base-T, IEEE 802.3bz 2500 /5000 BASE-T, IEEE 802.3at/af PoE standards.
- Supports 1 / 2.5 / 5Gbps Multi Gigabit Ethernet.
- The PoE splitter can use to connect non-PoE 802.3af /at compliant devices to PoE injector or PoE switch.
- Supports Output Voltage 12VDC with isolation protection.
- The maximum power output up to 27Watts.
- Supports Ethernet PoE to separate to only DC/Power and only Ethernet/Data.
- Supports power reverse acute protection design, and auto restarts to protect possible short circuit, which can reduce the damage caused by the short circuit.
- Bundle accessories for inside diameter 2.1 mm (PHY) to 2.1 (PHY) mm DC cable.
- Durable metal case design supports desktop and wall mounting installation.

## Installation

### Before Installation

If the device is generally DC receiving and does not support POE function, you can easily use POE-PD04S-12V to accept POE source power and apply it separately from the DC output power. Using the DC to DC cable which bundle in the package.



### Cables Installation

POE-PD04S-12V provides a POE-powered solution for non-IEEE 802.3af/at devices.

The setup of the splitter can be performed using the following steps:

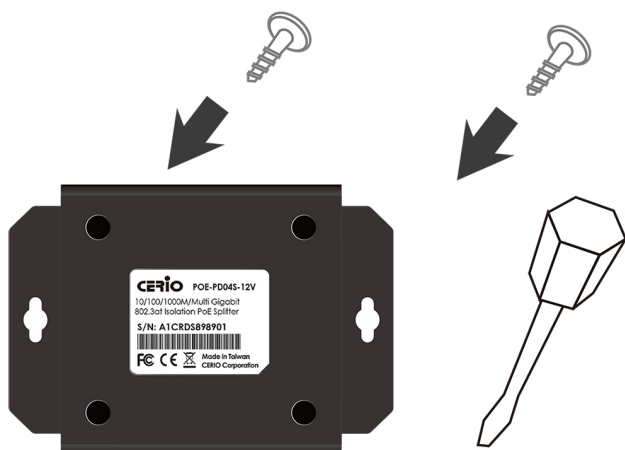
- Connect from "DATA OUT" of POE-PD04S-12V to the RJ-45 port of the remote device.
- Make sure first power source that the POWER+DATA in Port of the splitter is fully connected to the 802.3at source-powered PoE Injector or PoE Switch.
- Connect the correct DC plug from "DC OUT" of POE-PD04S-12V to the DC port of remote device. (Use a DC cable to connect devices that are to be powered by DC)

**Caution: Please ensure the output voltage is correct for remote device. Otherwise it will damage your remote device.**

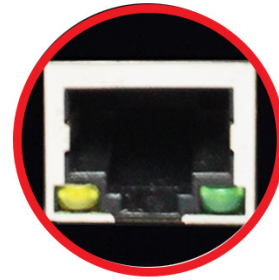
- Power on the remote device and the LED for voltage status indicator on POE-PD04S-12V will remains on.

## Installation

This device can be locked on the wall, (You can use the screw set which pack with product) or it can be put on desktop.



## LED Indicator :



<b>Power</b>	Yellow
<b>PoE</b>	Green (802.3at) Off (802.3af)

## Product Specifications

### Standards & Hardware Specifications

<b>Standard</b>	IEEE 802.3 10BASE-T IEEE 802.3u 100BASE-TX IEEE 802.3ab 1000BASE-T IEEE 802.3bz 2500/5000BASE-T IEEE 802.3af Power over Ethernet (PoE) IEEE 802.3at Power over Ethernet (PoE+) 10BASE -T: UTP Cat. 3 or up 100BASE-TX: UTP Cat. 5 or up 1G/2.5G/5GBASE-T: UTP Cat.5e or up 10M/100M/1G/2.5G/5G (Half-duplex), 20M/200M/2G/5G/10G (Full-duplex) PIN 1/2, 3/6 & 4/5, 7/8 End-span (Type-A): PIN 1/2,3/6 ; Mid-span (Type-B): PIN 4/5,7/8
<b>Network Media</b>	Connects PC/HUB/Switch RJ-45 x1 for Power + Data input RJ-45 x1 for Data output
<b>Data Transfer Rate</b>	ESD electrostatic discharge protection and load discharge anti-surge design
<b>Data PIN</b>	
<b>Power PIN</b>	
<b>Data In</b>	
<b>Ethernet Connector</b>	
<b>ESD Protection</b>	

### Environmental & Mechanical Characteristics

<b>Max Power Output</b>	27Watts
<b>Power Interface</b>	DC-Jack : Output to any none PoE 12V DC in device
<b>Power Requirement</b>	802.3af/at PoE Power Source
<b>PoE Input Voltage</b>	44V~57V
<b>DC Output</b>	12V
<b>DC Output Current</b>	Max 2.25A
<b>LED Indicators</b>	Power: Yellow PoE: Green (802.3at) , Off (802.3af)
<b>Operating Temperature</b>	0° to 50° C
<b>Storage Temperature</b>	-40° to 70° C
<b>Operating Humidity</b>	10% to 90% non-condensing
<b>Storage Humidity</b>	5% to 90% non-condensing
<b>Dimension</b>	111 x 79 x 35.5mm ( W x D x H )
<b>Unit Weight</b>	203g
<b>Case of Materials</b>	Metal
<b>Production Location</b>	TW
<b>Certification</b>	FCC, CE, RoHS compatible