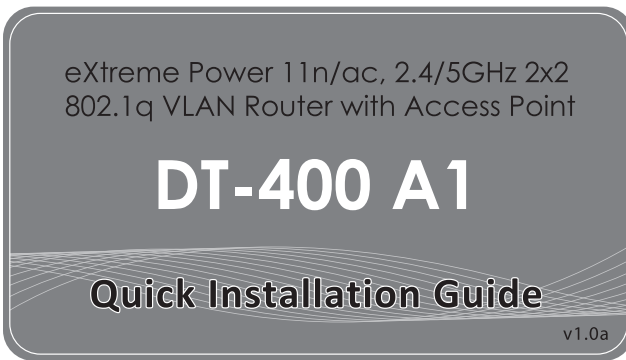


CERIO Cerio Corporation



http://www.cerio.com.tw Technical Mail : Support@cerio.com.tw

- Package Contents**
- DT-400 A1 Main Unit x 1
 - Power Adapter x1
 - Screw Pack x1
 - Quick Installation Guide x 1

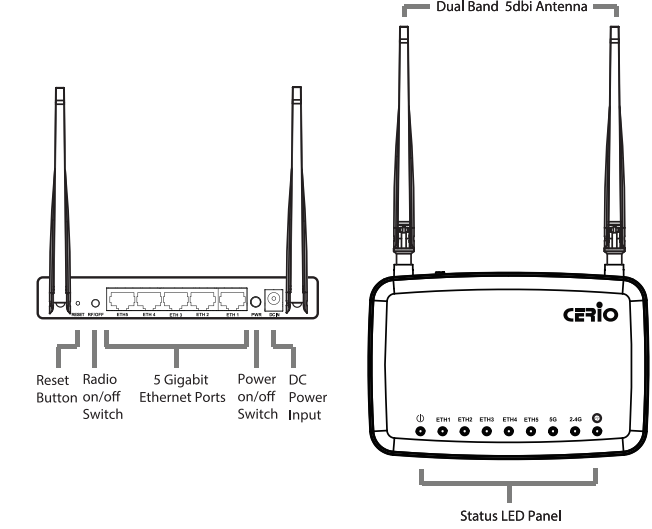
After you purchasing our product from distributor or shop, before you setup it, please open the package and check that all the components listed are include. If there is any item missing, please contact with the distributor or the shop where you buy.

1 Hardware Installation

1.1 Installation

- Windows, Maxintosh or Unix-like Operating System with an installed ethernet adapter.
 - Network cables. Use standard Cat.5 or Cat.5e UTP cables with RJ-45 connector.
 - With administrator's PC must be installed or support TCP/IP protocol.
 - For Internet access, and Internet Access account with an ISP, and either of a DSL or Cable modem.
1. **Connecting your computer to the ETH2~ETH5 port**
 2. **Connecting Cable/ADSL Modem to the ETH1 port**
 3. **Connecting the AC to DC power adapter to DT-400 A1**
 4. **Power on the Cable/ADSL modem,DT-400 A1 devices**

1.2 Hardware Overview



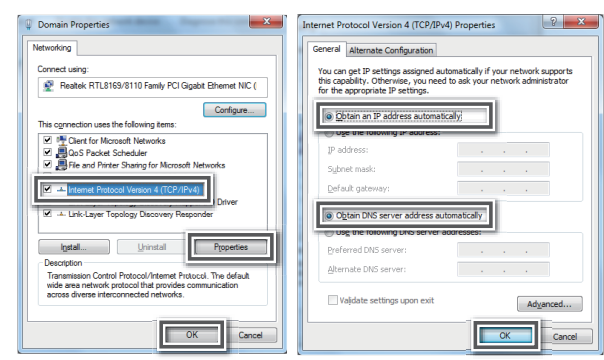
2 TCP/IP Setting & Login

2.1 Configure your PC/NB to connect with DT-400 A1

Please make sure your network interface card configuration has been completed and activated on your operating system and connected to one of the LAN port of DT-400 A1 through Cat.5 or Cat.5e cable. Please make sure the LED on DT-400 A1 is already on and the LED corresponds with the port which you connected.

Please follow the steps below to setup your computer

1. Go to Start → Settings → Control Panel
2. If you are Windows XP user, please double click the icon Network
3. If you are Windows Vista/7/8 user, please click Network and Sharing
4. Highlight the icon Local Area Connection, right click your mouse, and click Properties
5. Click Network and Internet Connections
6. Choose Obtain an IP address automatically and Obtain DNS server address automatically, and then press OK to close the Internet Protocol (TCP/IP) Properties window
7. Press OK to close the Local Area Connection Properties window

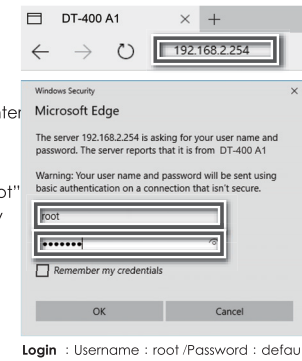


2.2 Login to DT-400 A1

Please Follow the instrature as below to finish the hardware installation.

When you finished the TCP/IP setting for your Windows now we will try to login to DT-400 A1 WEB management interface.

1. Startup Edge or Internet Explorer and enter http://192.168.2.254, then press Enter.
2. You will enter the user name and password. The default user name is "root", password is "default". You can modify your user name and modify your password. You need modify you user name and password when you successfully login, incase anyone else may invade your Internet illegally.

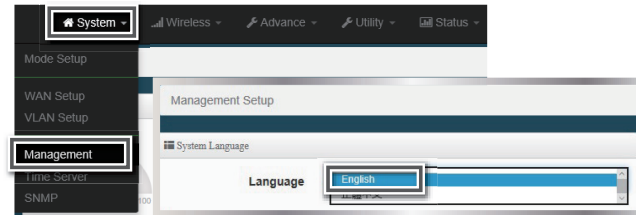


If you can't to login to DT-400 A1 WEB management interface, please reset default the DT-400 A1 to factory default (Press the "reset" button for 10-15 seconds located on rear panel then release it and DT-400 A1 will automatically restart and restore to default settings.) then try to login again and make sure there is no others network devices use the same IP address with DT-400 A1.

3 First Setting DT-400 A1 UI Page

3.1 Choose & check your system language

Please click "System" → "Management", and select your Language to finish System Language setting.



3.2 Choose & check your operating mode

Please click on System → Operating Mode → Check & confirm your operating mode.

There are five operation for the select:

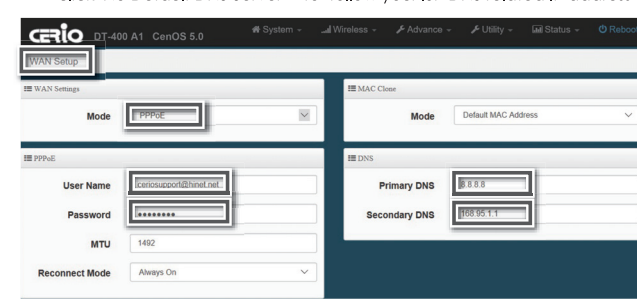
- (1). CAP Mode
- (2). Access Point Mode
- (3). Client Bridge Mode
- (4). WISP Mode
- (5). Router Mode

Use the ADSL/Cable Broadband Router function of the user, please keep the default router AP mode, do not need to change to other modes.

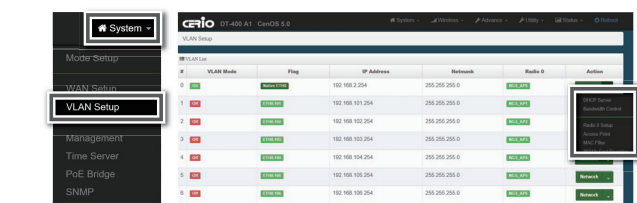


3.3 Configure WAN Setup / LAN Setup / Wireless Setup

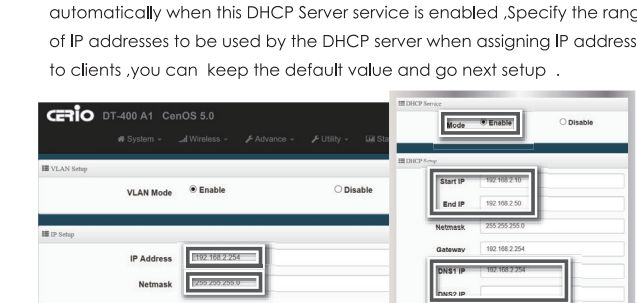
1. "Internet Connection Type" → Please base on ISP Type to choose WAN Connection Type, Cable Modem ISP Type use Dyamic IP Type, ADSL ISP use PPPoE Type and key in your ISP Username & Password for ADSL Type.
2. "DNS" → If you don't know for your ISP correct DNS IP address, please click No Default DNS Server" to follow your ISP DNS related IP address.



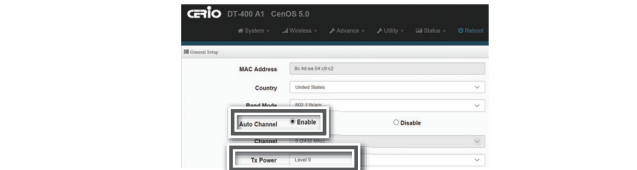
3. "LAN Setup" → Here are the instructions for setup your DT-400 A1 local LAN IP Address and Netmask. If you don't want change the default IP 192.168.2.254 address, please keep the default and go next setup.



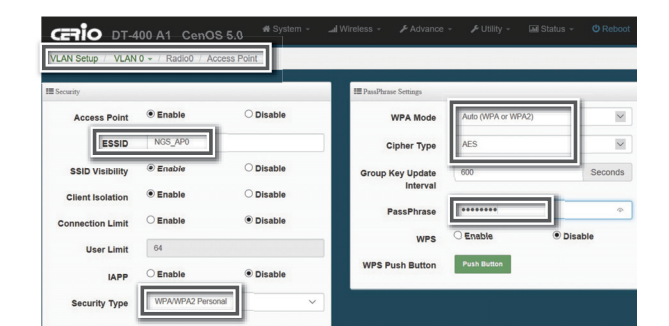
4. "DHCP Server" → Devices connected to system can obtain an IP address automatically when this DHCP Server service is enabled. Specify the range of IP addresses to be used by the DHCP server when assigning IP address to clients, you can keep the default value and go next setup.



5. "Wireless Setup" → if you are not sure which setting to choose, please then the default setting to best WiFi Smart channel udgment for Auto channel, & adjust the output power to level 9 (100%) Extended Service Set ID indicates the SSID which the clients used to connect to the access point ESSID.

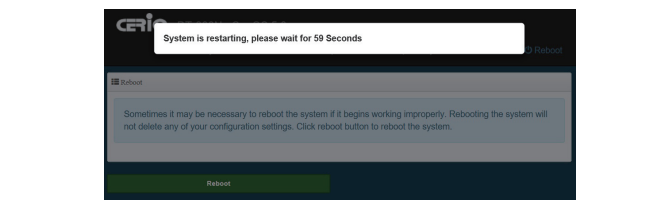


6. "Wireless Security Setup" → Suggested setting that you use Wireless encryption authentication type for Security Type : to "WPA2-PSK", the Cipher Suite : to "AES", Key Type : to "ASCII" for 11n high speed mode.



7. "Pre-Shared Key" → Enter the information for pre-shared key; Pre-shared key can be either entered as a 256-bit secret in 64 HEX digits format, or 8 to 63 ASCII characters. The Pre-Shared Key sample as "12345678" wireless encryption key for wireless Access.

8. Click "Finish" button to save your setting, please wait 50 seconds till completion of the reboot process.



Notice: If you have advanced setting and more question, Please visit our website and download the PDF manual.

© Copyright 2017 CERIO Corporation, all rights reserved.

Warranty and Policy

Model Name	
Serial No.	
Date of Purchase	
Where Purchased	

CERIO Corporation product warranty services

The warranty does not apply to any of the following (servicing charges are based on standard rate published by the company) If the product is damaged or has developed malfunctions not caused by human error. If you require technical support information, please visit our web site at : http://www.cerio.com.tw

Warranty period
CERIO Corporation (CERIO) provides two years warranty services, all products will carry 1 year warranty service free of charge and one year limited warranty with charge.(International Regional)

Please note : Warranty for hardware does not include any consumables, second-hand products, wires, batteries, new clearance products, power adapter, accessories and cables etc.

CERIO Corporation servicing center (Warranty services)

When sending devices by post or courier for servicing, the customer is responsible for packing the product properly and paying the shipping fee, Customers can bring the faulty item in person to the authorized dealer where the device was purchased. For more information regarding our warranty and service policy please visit our website at http://www.cerio.com.tw or e-mail to: support@cerio.com.tw

Applicable to all hardware products : when sending the product for service, you need to provide :
(1) Your name, address and telephone number.
(2) The original copy of warranty certificate where it must be stamped by the dealer and properly marked with the date of purchase and the correct matching serial number.
(3) If the warranty certificate has not been stamped by your local dealer, you may present the original till receipt where it is clearly printed with details of the product. If you are unable to provide the above information, CERIO will regard the warranty period to start from the date of dispatch from the factory before any service takes place.

Attention : for customers claiming for company services, it is advised to backup any information stored in the product to be serviced. We are not responsible for any damage or loss of data stored in the unit; these will not be covered in the warranty.

(Please refer to Cerio Corporation's official website for more details)

Dealer	
--------	--