



CERIO <http://www.cerio.com.tw> Technical Support +886-2-86676160 #222

Package Contents

- DT-300N Main Unit x 1
- RJ-45 UTP Cable x 1
- Power Adapter (Power Supply)
- PoE Adapter x 1
- Wall Mounting kit x1
- Desktop Blister Stand x1
- Self Locking Cable Ties for Pole Mounting x 2
- CD - User's Manual x 1
- Quick Installation Guide x 1
- Warranty Card x 1

After you purchasing our product from distributor or shop, before you setup it, please open the package and check that all the components listed are include. If there is any item missing, please contact with the distributor or the shop where you buy.

1 Hardware Installation

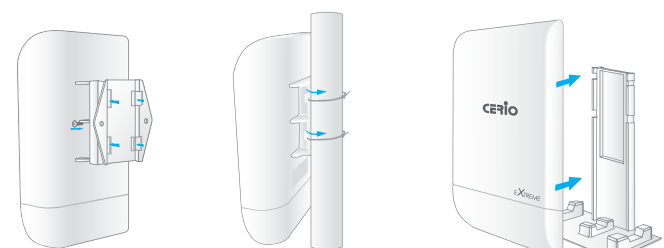
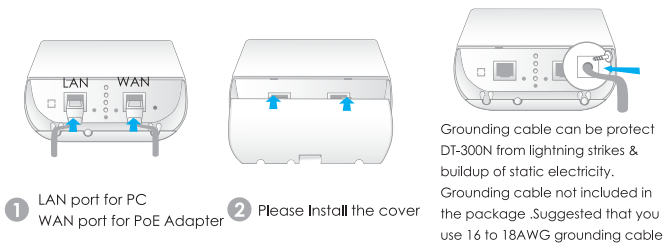
1.1 System Requirement

- Windows, Maxintosh or Unix-like Operating System with an installed ethernet adapter.
- Network cables. Use standard Cat.5 or Cat.5e UTP cables with RJ-45 connector.
- With administrator's PC must be installed or support TCP/IP protocol.
- For Internet access, and Internet Access account with an ISP, and either of a DSL or Cable modem.

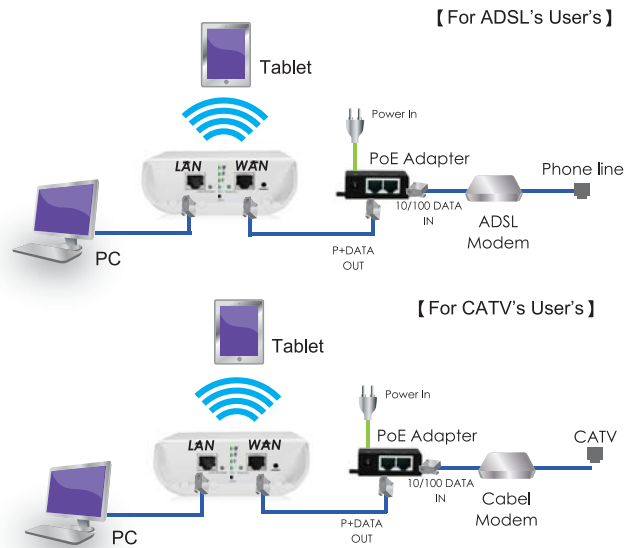
1.2 Hardware Installation Procedures

Please Follow the instrature as below to finish the hardware installation.

Note: Connect Grounding Cable



Wall mounting Sample for Mounting on wall for DT-300N
Pole mounting Sample for Mounting on bat for DT-300N
Desktop Stand Sample for blister stand on desktop



- 1. Connecting your computer to the LAN port**
Attach one end of the Ethernet cable connector from your hub, switch or a computer's Ethernet port to the LAN PORTS of your DT-300N.
- 2. Connecting the power adapter**
Connect the single DC output connector of the power adapter to the power jack on the POWER IN side of the PoE Adapter . Then plug the Power Adapter into an AC outlet.
- 3. Connecting the POE Adapter**
Connector an Ethernet cable from your Cable/ADSL modem to the 10/100Mbps DATA IN side of the PoE Adapter
- 4. Connecting POE Adapter to the WAN port**
Connector an Ethernet cable from the P+DATA OUT side of the PoE Adapter to the WAN PORTS of your DT-300N.
- 5. Power on the following devices in this order:**
Cable/ADSL modems, Router, and PCs.

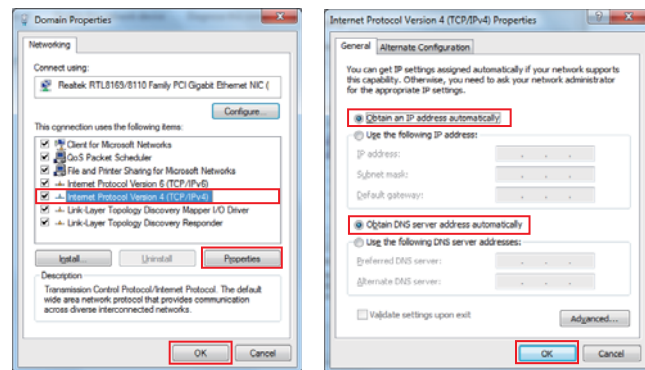
3 TCP/IP Setting & Login

2.1 Configure your PC/NB to connect with DT-300N

Please make sure your network interface card configuration has been completed and activated on your operating system and connected to one of the LAN port of DT-300N through Cat.5 or Cat.5e cable. Please make sure the LED on DT-300N is already on and the LED corresponds with the port which you connected.

Please follow the steps below to setup your computer

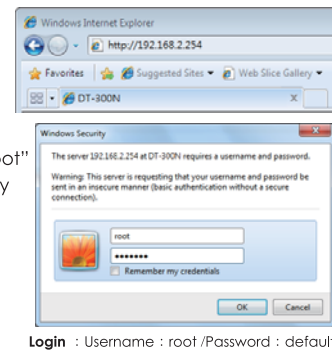
1. Go to Start → Settings → Control Panel
2. **If you are Windows XP user**, please do Double click the icon Network
3. **If you are Windows Vista/7 user**, please Click **Network and Sharing**
4. Highlight the icon Local Area Connection, right click your mouse, and click Properties
5. Click Network and Internet Connections
6. Choose Obtain an IP address automatically and Obtain DNS server address automatically, and then press OK to close the Internet Protocol (TCP/IP) Properties window
7. Press OK to close the Local Area Connection Properties window



2.2 Login to DT-300N

Please Follow the instrature as below to finish the hardware installation. When you finished the TCP/IP setting for your Windows now we will try to login to DT-300N WEB management interface.

1. Startup Internet Explorer and enter <http://192.168.2.254>, then press Enter
2. You will enter the user name and password. The default user name is "root", password is "default". You can modify your user name and modify your password. You need modify you user name and password when you successfully login, incase anyone else may invade your Internet illegally.



Login : Username : root /Password : default

If you can't to login to DT-300N WEB management interface , please reset default the DT-300N to factory default (Press the "reset" button for 10-15 seconds located on rear panel then release it and DT-300N will automatically restart and restore to default settings.) then try to login again and make sure there is no others network devices use the same IP address with DT-300N.

3 First Setting DT-300N UI Page

3.1 Chose & check your system language

Please click 「System」 → 「Management」 and select your Language to finish System Language setting .



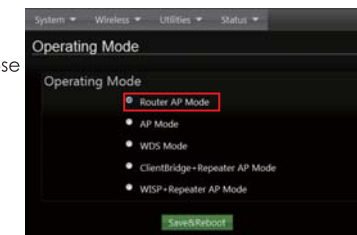
3.1 Chose & check your operating mode

Click 「System」 → 「Operating Mode」

Check & confirm your operating mode. Have five operating mode for you choose

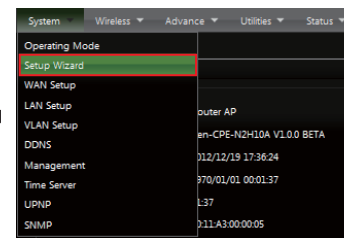
- (1) . Router AP Mode
- (2) . AP Mode
- (3) . WDS Mode
- (4) . Client Bridge+Repeater AP Mode
- (5) . WISP + Repeater AP Mode

You can keep the Router AP Mode . go bext setup.

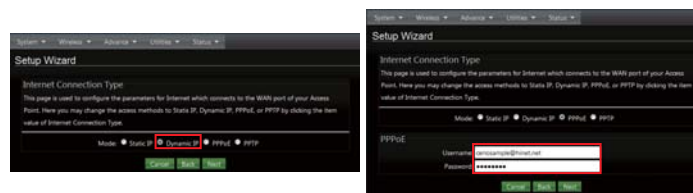


3.2 Setup Wizard Guide

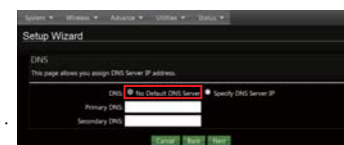
After choose Router AP mode , Please go to 「System Wizard」 → 「Setup Wizard」 Setup for your DT-300N Setting ,Next and follow the below wizard guide.



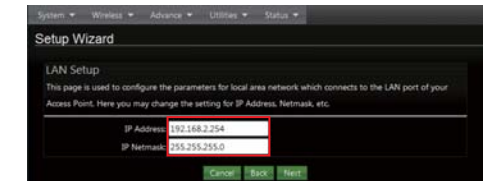
1. 「Internet Connection Type」 → Please base on ISP Type to choose WAN Connection Type , Cable Modem ISP type use Dyamic IP Type , ADSL ISP use PPPoE Type and key in your ISP Usename & Password for ADSL Type.



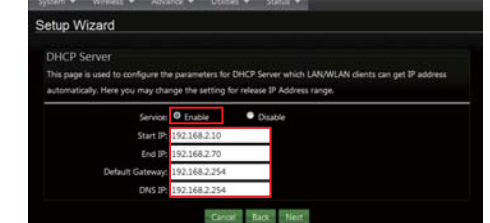
2. 「DNS」 → If you don't know for your ISP correct DNS IP address , please click " No Default DNS Server " to follow your ISP DNS related IP address .



3. 「LAN-Setup」 → Here are the instructions for setup your DT-300N local LAN IP Address and Netmask. If you don't want change the default DT-300N IP 192.168.2.254 address , please keep the default and go next setup .

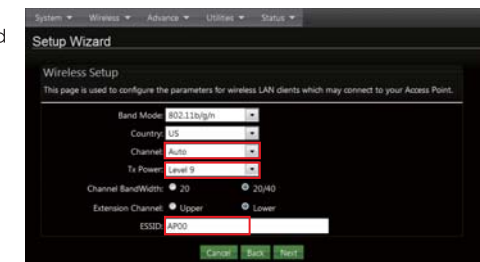


4. 「DHCP Server」 → Devices connected to system can obtain an IP address automatically when this DHCP Server service is enabled .Specify the range of IP addresses to be used by the DHCP server when assigning IP address to clients ,you can keep the default value and go next setup .

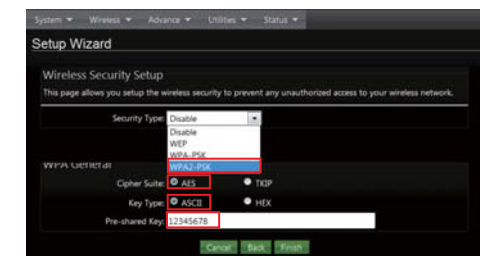


5. 「Wireless Setup」 → if you are not sure which setting to choose, please then the default setting to best WiFi Smart channel udgment for Auto channel, and adjust the output power to level 9 (100%) Extended Service Set ID indicates the SSID

which the clients used to connect to the access point ESSID.

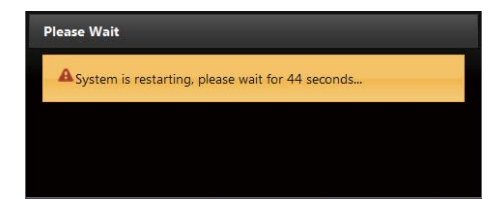


6. 「Wireless Security Setup」 → Suggested setting that you use Wireless encryption authentication type for Security Type : to "WPA2-PSK", the Cipher Suite : to "AES", Key Type : to "ASCII" for 11n high speed mode .



7. 「Pre-Shared Key」 → Enter the information for pre-shared key; Pre-shared key can be either entered as a 256-bit secret in 64 HEX digits format, or 8 to 63 ASCII characters. the Pre-Shared Key sample as "12345678" wireless encryption key for wireless Access .

8. Click 「Finish」 button to save your setting , please wait 50 seconds till completion of the reboot process.



If you have advanced setting and more question, you can check to CD Manual .The complete manual in the mere CD disc explains .