

eXtreme Power 11n 2.4Ghz 2x2
Ceiling Wall PoE Access Point

CW-300N

Quick Installation Service Card

CERIO <http://www.cerio.com.tw>

Technical Support
+886-2-89116160 #222

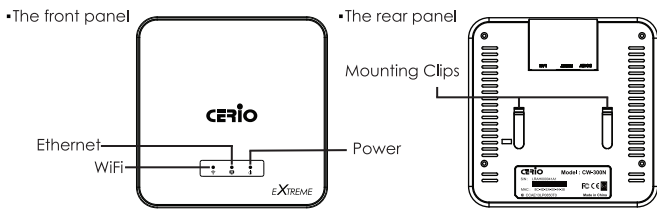
Package Contents

- CW-300N Main Unit x1
- Mounting Bracket and Screw Pack x1
- Quick Installation Service Card x1

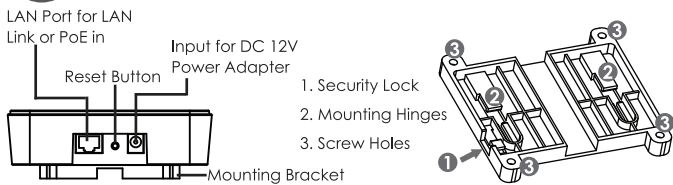
NOTICE

A random lightning strike can easily cause damage to WIRELESS AP devices. (Lightning) DAMAGE IS NOT COVERED UNDER WARRANTY.

1 Front and Rear Panel Interface

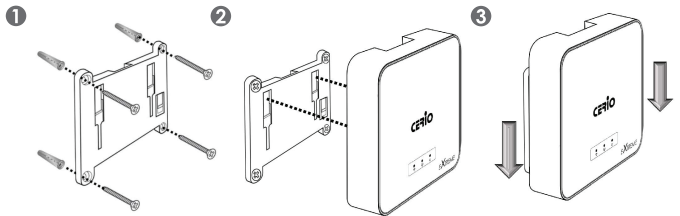


2 Hardware Installation

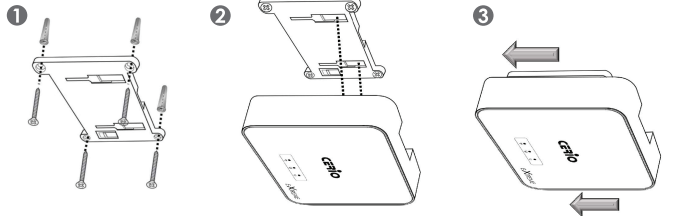


3 Mounting Installation

Wall Mount

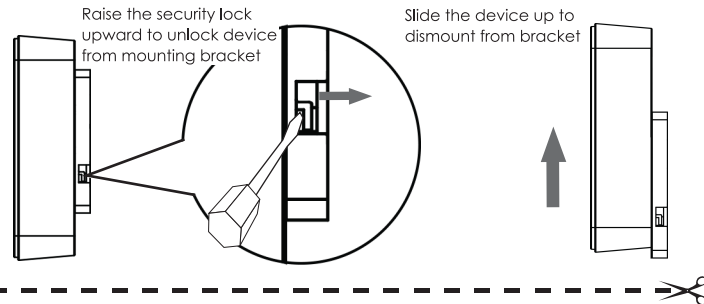


Ceiling Mount



- Step 1** Position the Mounting Bracket in the desired location. Use the screws and anchors in the mounting kit to secure the Bracket into position.
- Step 2** Align the device with the Mounting Hinges on the bracket. Ensure that the Mounting Clips fit correctly into each slot.
- Step 3** Slide the CW-300N down until the device is locked into place.

4 Uninstallation



Warranty Card

• Please read Cerio Corporation Warranty Policy first before using •

Model Name	
Serial No.	
Date of Purchase	
Where Purchased	

Customer Name	
Country	
ZIP Code	
Address	
Phone	Ext.
Email	
Date	

Dealer	
--------	--

Warranty Policy

CERIO Corporation product warranty services

If the product is damaged or has developed malfunctions not caused by human error, If you require technical support information, please visit our web site at : <http://www.cerio.com.tw>

Warranty period

CERIO Corporation (CERIO) provides three years warranty services, all products will carry two years warranty service free of charge and one year limited warranty with charge.

Please note : Warranty for hardware does not include any consumables, second-hand products, wires, batteries, new clearance products, power adapter, accessories and cables etc.

The warranty does not apply to any of the following (servicing charges are based on standard rate published by the company) :

- (1) Damages caused by accident, overloading, misuse, improper use or other types of damage not related to CERIO product quality or design.
- (2) The machine is damaged by unforeseeable natural disasters (flooding, fire hazard, earthquake, typhoon or thunder) or causes due by human error.
- (3) Attempt to open product, dismantle, attach other items or unauthorized retrofit from CERIO.
- (4) Consumables or components or the product warranty is outdated.
- (5) Serial number on the CERIO product or component has been removed or damaged.
- (6) Claims without presenting a warranty policy, or if presented but the warranty policy is not properly marked with the date of purchase, stamped by the dealer or shop or the marked information has been tempered with.

CERIO Corporation servicing center Warranty services

If any fault has developed during the warranty period, after confirmation by CERIO technician, we will Repair the product directly or replace with a brand new product or a refurbished item. After servicing, the warranty period will be levied either based on the remaining warranty period or 90 days from the date of service. After product or component replacements, the newly installed components are your personal property, whereas the replaced items become the property of CERIO.

If sending by post or via courier for servicing, the customer is responsible to pack the product properly and to pay for transit. Customers can also bring the faulty item in person to authorized dealers where you have purchased the product. If you prefer, you may bring the product to our customer service department (only applicable in Taiwan) for tests or services. For more information about the contact details, please visit our web site at : <http://www.cerio.com.tw> or please call : 886-2-8911-6160 (only applicable in Taiwan).

Applicable to all hardware products : when sending the product for service, you need to provide :

- (1) Your name, address and telephone number.
- (2) The original copy of warranty certificate where it must be stamped by the dealer and properly marked with the date of purchase and the correct matching serial number.
- (3) If the warranty certificate has not been stamped by your local dealer, you may present the original till receipt where it is clearly printed with details of the product. If you are unable to provide the above information, CERIO will regard the warranty period to start from the date of dispatch from the factory before any service takes place.

Attention : for customers claiming for company services, it is advised to backup any information stored in the product to be serviced. We are not responsible for any damage or loss of data stored in the unit; these will not be covered in the warranty.

Disclaimer

- We will not be responsible if it is believed the damage is caused by the customer, or other personnel, deliberately, or by accident.
- We will not be responsible for any loss caused by continuous use or inability to use the product (for example : interruption of business, loss of profits, contents in the memory module changed or disappeared etc.).
- We will not be responsible for costs due to damage other than repairs to CERIO products. Any damage or malfunction caused to other machines linked to CERIO products is not cover by this warranty.