

CERIO Corporation

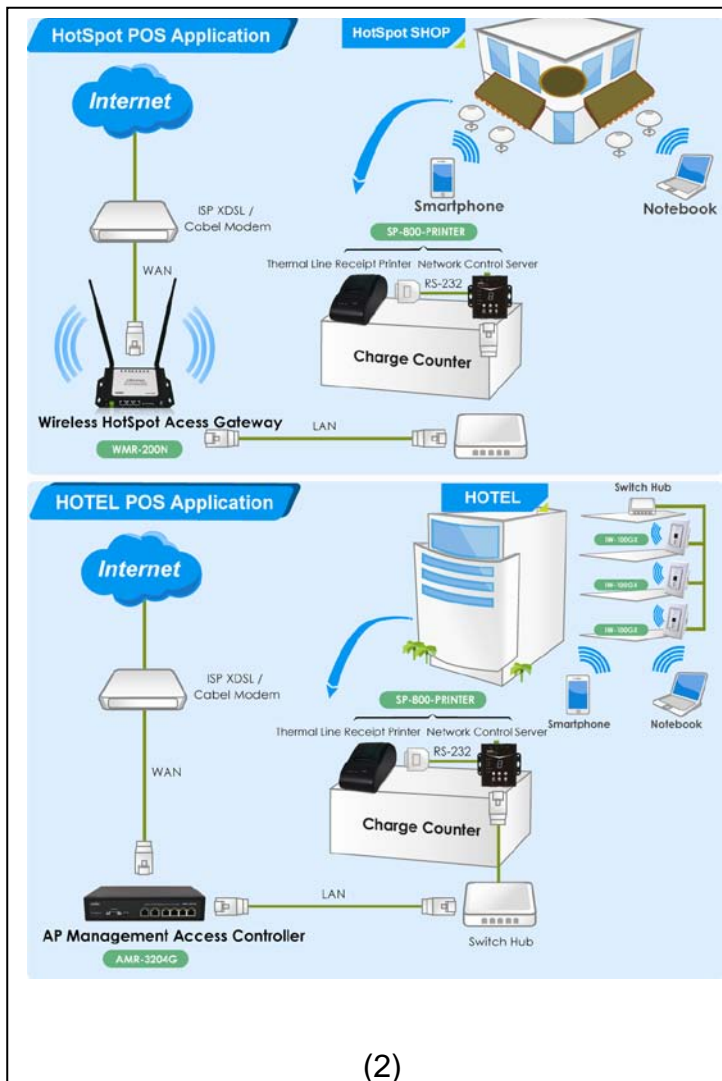
HotSpot Account Control POS



v1.0a

Copyright © 2011 by Cerio Corporation. All rights reserved.

Tel : + (886) 2-8967-8163 #222
Fax : + (886) 2-8967-8555
Sales-Mail : sales@cerio.com.tw

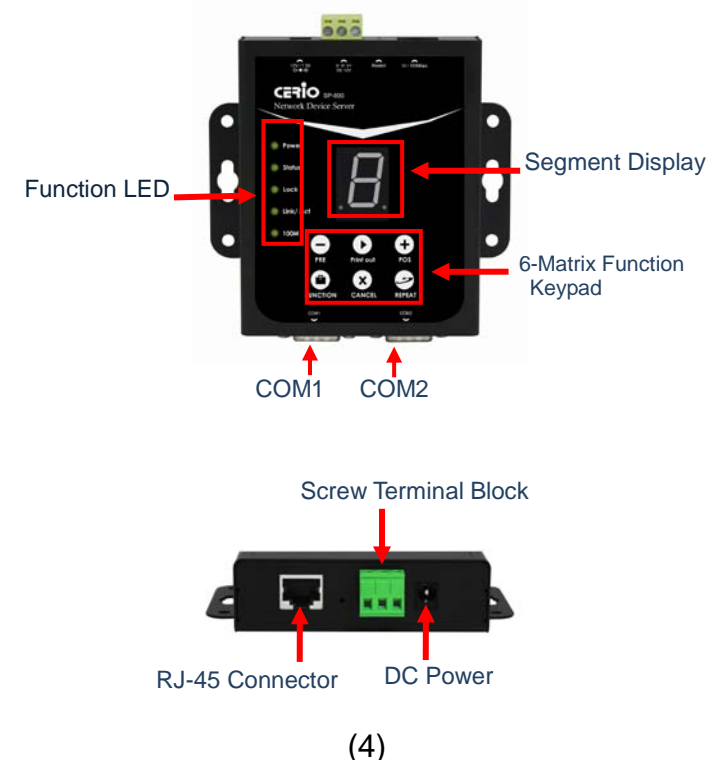


(2)

Thermal Line Receipt Printer:

- Halt-on protect for over heat 60 °C
- Interface for Serial available
- Use ESC / POS printer commands set
- Drop and print paper installation for user friendly
- Simple paper jam elimination
- Print Head 50Km Life Support
- LED Indicators support Power, Error, Paper

4. Network Control Server Overview



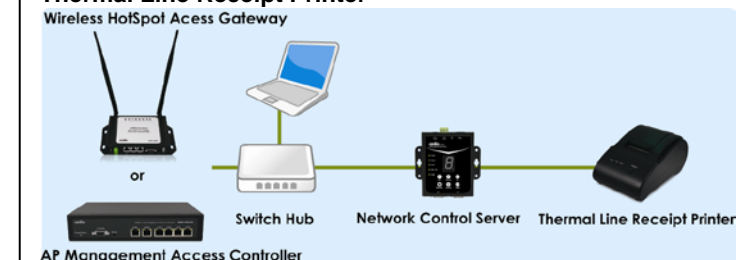
(4)

5. Line Thermal Printer Overview



6. Installation

Please follow the steps mentioned below to install the hardware of **Network Control Server with WMR-200N or AMR-3204G and Thermal Line Receipt Printer**



- Connect **Network Control Server** to your WMR-200N or AMR-3204G via Ethernet cable. Connect one end of the Ethernet cable to the LAN port of **Network Control Server** on the front panel. On your environment, connect the other end of the cable to your network.
- Connect **Network Control Server** to **Thermal Printer** via the provided RS-232(DB9 to DB25) cable. Connect one end of the RS-232 cable to **COM1** port of **Network Control Server** on the front panel. Connect the other end of RS-232 cable to **Line Thermal Printer DB25 Connector** for communicating with Thermal Printer.
- Connect the DC power adapter to the **Network Control Server** power socket on the rear panel.

(6)

1. Preface

With the growth of the Internet age and ever increasing demand for wireless Internet access in public locations ranging from places such as airports, hotels, conventions, stadiums, restaurants or coffee shops, this has revolutionized the Hotspot application and becoming more and more apparent in our daily lives.

The CERIO WMR-200N or AMR-3204G provides the perfect opportunity to generate added revenue for your business and ensuring quality of service for customers within a secured network and prevent unwelcomed users to access the Internet.

WMR-200N or AMR-3204G on-demand ticket billing kits containing Thermal Printer and Network Control Server provides instant ticketing for users and comes with two COM ports for redundancy where two Line Thermal Printers can be attached at the same time. CERIO WMR-200N or AMR-3204G on-demand billing kit is designed with ease of use for account generation via Network Control Server from the built-in On-Demand billing plan from WMR-200N or AMR-3204G and then prints the account ticket via Thermal Printer.

The CERIO WMR-200N or AMR-3204G on-demand ticket billing kits is easy to installation and setup where the Line Thermal Printer connects directly to Network Control Server with serial port (RS-232) COM1 and COM2 (for redundancy) and standard TCP/IP (RJ45) interface to connect to CERIO WMR-200N or AMR-3204G. It is simple to operate with just a few clicks on the Network Control Server and out comes the ticket from the Line Thermal Printer.

(1)

2. Package Contents

Network Control Server :

Main Unit	x1
Power Adapter	x1
Quick Installation Guide	x1
Warranty Card	x1

Thermal Line Receipt Printer :

Main Unit	x1
Power Adapter	x1
D-Sub 25(Male) to D-Sub 9pin(Female) RS232 cable	x1
Thermal Paper	x1

3. Feature

Network Control Server :

- 10/100 Mbps Fast Ethernet full duplex auto negotiation
- Two DB9 RS-232 Console supported
- (0~9 display), 10 segment LED display
- 6 matrix function keys
- Up to 921.6 Kbps baud rate supported
- Ethernet activity, Power LED's
- Monitor, manage and control industrial field devices remotely
- Support TCP Server/ Client link mode
- DHCP, BOOTP, Static IP, and ARP supported
- Built-in Web server for configuration
- Upgrade firmware from remote-PC via Ethernet
- Support 12~60VDC Wide Voltage and Over Voltage Protection
- Support overload current and reverse polarity protection and One removable 2-contact terminal Block
- On Desktop & Wall Mountable Form Factor
- Wall-mount Rugged metal case with IP50 compliance for industrial usage
- Provide DIN-Rail Mount can be optional

(3)

LED Indicate :

- 1) **Power** : LED **ON** indicates power on, and **OFF** indicates power off.
- 2) **Status** : LED **ON** indicates the device **associated** with WMA-200N or AMR-3204G; LED **OFF** indicates the device **unassociated** with WMA-200N or AMR-3204G; LED **FLASH** indicates the **FUNCTION** key activated.
- 3) **Lock** : LED **ON** indicates the Keypad **locked**; LED **OFF** indicates the Keypad **unlocked**; LED **FLASH** indicates input digit number key for unlocking.
- 4) **Link/Act** : Link and activity of Ethernet port
- 5) **100M** : Link speed of Ethernet port.

Keypad :

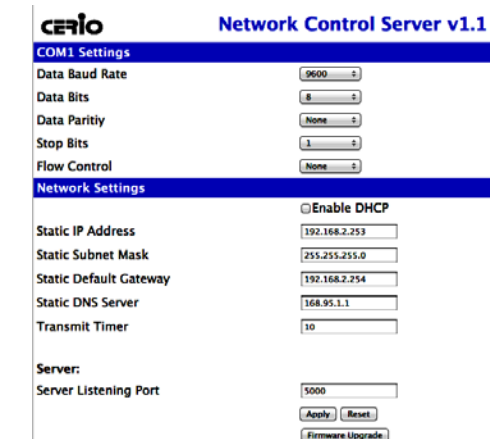
- 1) **- / +** : **Increase(POS)** and **Decrease(PRE)** number for selecting **Plan** or **Function** option. **Press** and **Hold two** button for more than **5 seconds(until Status LED FLASH)** to reset the device to default configurations.
- 2) **Print out** : Click to printer On-Demand Account Tickets or Function selected.
- 3) **FUNCTION** :
 - ✧ **Lock Keypad function** : Press and Hold button until **Lock LED ON**.
 - ✧ **Unlock Keypad function** : Press button until **Lock LED FLASH**, then input key for unlocking.
 - ✧ **Link Test function** : Click button, then select in number **1** and click **Print out**
 - ✧ **Statement Printing** : Click button, then select in number **9** and click **Print out**, the **Line Thermal Printer** will print Statement of "**Current Balance**"; select in number **8** and click **Print out**, the **Line Thermal Printer** will print Statement of "**Early Balance**".
- 4) **CANCEL** : Stop to print Statement, Clear input key for unlocking or cancel other event.
- 5) **REPEAT** : Repeat to print **previous** Tickets.

(5)

7. Getting Started

Step :

- 1) Once the hardware installation is done, set the IP segment of the administrator's computer to be in the subnet of **192.168.2.x**. Since the SP-800's default IP address is **192.168.2.253**, make sure no other network devices are assigned an IP address of **192.168.2.253**.
- 2) Launch a web browser to access the web GUI of SP-800 by entering "**http://192.168.2.253/setting.htm**" in the address field.
- 3) After a successful login, the "**Setting Page**" will appear on the screen.



- 4) Set **COM1 Settings** for communicating with TLR-PRINTER Thermal Printer.(The default COM1 Setting already matched with TLR-PRINTER)
- 5) Configure IP Address in the same range of **WMR-200N or AMR-3204G**.(The default LAN IP address is **192.168.2.1**)
- 6) Select desired **Server Listening Port**, default is **5000**.
- 7) Click **Apply** button to enable new setting.

(7)

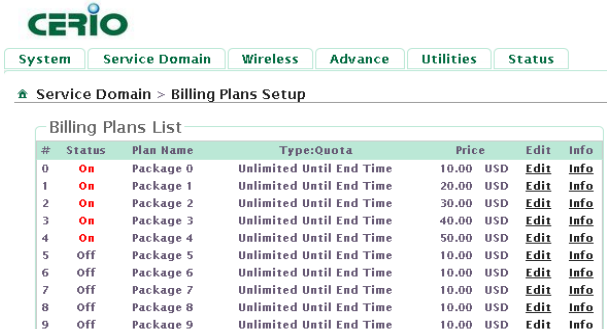
8. On-Demand Account Tickets Function Configuration

The CERIO AMR-3204G or WMA-200N provides wireless and wired network service with On-Demand authentication for clients in Service Domain. Administrator can select Billing Plan on each Thermal Printer. If *Billing Plan* is enabled, the Thermal Printer can generate On-Demand's tickets. The clients are required to get authenticated successfully before access the Internet.

➤ AMR-3204G or WMA-200N Configuration Steps :

Step 1 : Create Billing Plans.

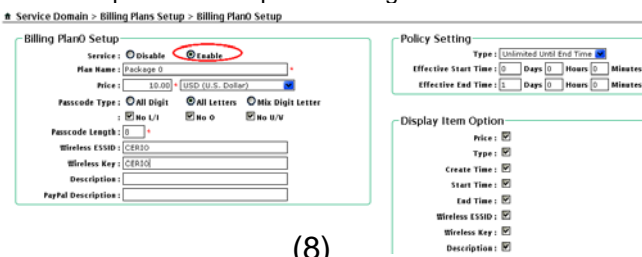
- Click **Service Domain** -> **Authentication** -> **On-Demand** -> **Billing Plans Setup**, the Billing Plans List page will appear.



will appear. Here provides 10 sets of independent billing plans.

- Select desired Billing Plan and click **Edit**, then setup page will appear.

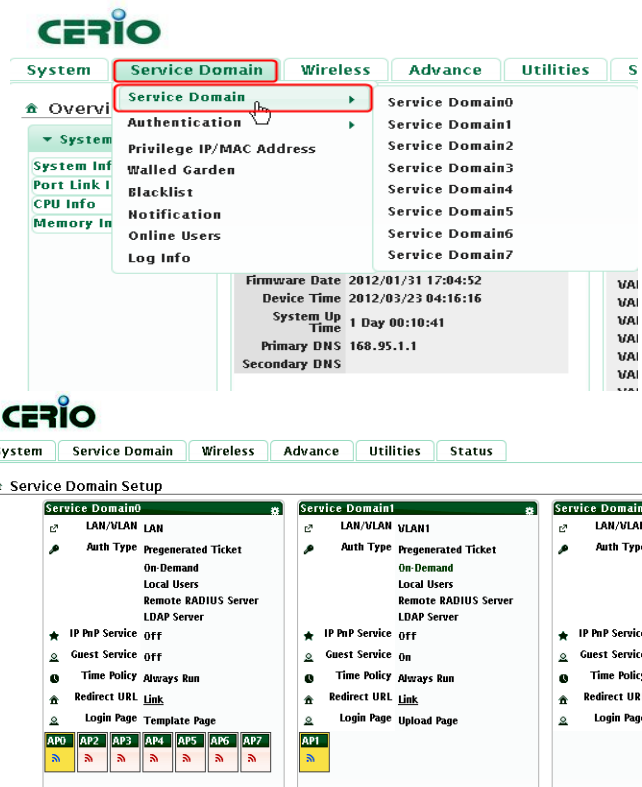
- Enable Billing and set desired billing plan for uses used. Below depicts an example for Billing Plan 2 S



(8)

Step 2 : Set Virtual AP and Select On-Demand's Authentication for Service Domain

- Click **Service Domain**, the Service Domain Setup page will appear.
- Set **VAP0** in Domain1 and select **On-Demand** in Authentication Type. Below depicts an example for Domain1 with AP0 and On-Demand's authentication



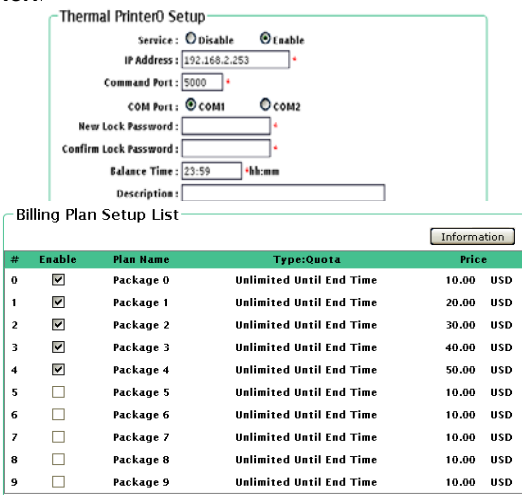
(9)

Step 3 : Select Billing Plans for Thermal Printer.

- Click **Service Domain** -> **Authentication** -> **On-Demand** -> **Thermal Printer Setup**, the Thermal Printer List page will appear.

#	Status	IP Address	Command Port	COM Port	Balance Time	Description	Edit	Info
0	On	192.168.2.253	5000	COM1	23:59		Edit	Info
1	off		5000	COM1	23:59		Edit	Info
2	off		5000	COM1	23:59		Edit	Info
3	off		5000	COM1	23:59		Edit	Info
4	off		5000	COM1	23:59		Edit	Info
5	off		5000	COM1	23:59		Edit	Info
6	off		5000	COM1	23:59		Edit	Info
7	off		5000	COM1	23:59		Edit	Info
8	off		5000	COM1	23:59		Edit	Info
9	off		5000	COM1	23:59		Edit	Info

- Select desired Thermal Printer and click **Edit**, then setup page will appear.
- Enable Thermal Printer and set related setting with **Network Control Server**. Then select desired Billing Plan for **Thermal Printer**. Below depicts an example.



(10)

Step 4 : Reboot WMR-200N or AMR-3204G.

- Click **Reboot** button to enable new setting.

Step 5 : Network Control Server Link Test .

- After reboot, the **Network Control Server Status** LED should be **ON**.
- Press **FUNCTION** button, the **Status** LED should be **FLASH**.
- Select in number **1** and press **Print out** button, the **Thermal Printer** should be print "**Thermal Printer Link Test !**" message
- Press **CANCEL** button to stop function event, the **Status** LED should be **ON**.

Step 6 : Generate On-Demand's Ticket from Thermal Printer.

- Press **POS** or **PRE** button, select desired Billing Plan(e.g Plan 0~2 for this example)and click **Enter** button to print ticket for your visitor. This ticket contains a unique login **Passcode**.



Step 7 : User your Ticket to Access Internet.

- Connect a client device (e.g. Notebook) with wireless interface to scan the configured ESSID of WMR-200N or CERIO AP (e.g. **AP00**) and get associated with this ESSID.
- The client device will obtain an IP address automatically via DHCP from WMR-200N or AMR-3204G. Open a web browser on a client device, access any URL, and then the Domain1 **User Login Page** will appear.

Enter the **Passcode** of a printer ticket previously generated via TLR-PRINTER Thermal Printer . Then Click **Login** button. Below depicts an example for login with Pass code.

(11)



Congratulation !!
The success page as below will appear after a client has successfully logged into WMR-200N or AMR-3204G and has been authenticated by the system. Now, you are connected the network and Internet!

9. Network Control Server Specifications

Hardware Specifications	
Indicators (LED)	● Power
	● 10Base-T connection
	● 100Base-TX connection
	● Link Status
	● Keypad Status
LED Display	(0~9 display), 10 segment LED display
Keypad	6 matrix function keys
Serial Port	DB-9-DTE(male) * 2
Data Rates	COM1 : 1200 to 921600 bps COM2 : 9600 bps
Characters	5, 6, 7, 8 data bits
Parity	Odd , Even, None
Stop Bits	1 or 1.5
Flow Control	XON/ XOFF (Software), RTS/ CTS (Hardware), None
Network Interface	Ethernet 10Base-T or 100Base-Tx (Auto-Sensing) RJ45 * 1
Link Mode	TCP Server/Client
Protocols	TCP, UDP, ICMP, IPv4, DHCP, BOOTP, ARP, DNS, ICMP, Telnet, DHCP, HTTP
Environmental & Mechanical Characteristics	
Power Consumption	1.68W Max

(12)

Wide Voltage	12-60 VDC
Isolation	Serial : Transient protection for data lines (TX and RX) to ±15KV(air),±8KV(contact) RJ45: Transient protection for data lines (TX and RX) to ±15KV(air),±8KV(contact) Power Input : 1500W peak pulse power capability with 10/1000 us waveform repetitive rate (duty cycle) : 0.01% ; Uni and Bidirectional
Operating Temperature	0 °C ~ 60 °C
Storage Temperature	0 °C ~ 70 °C
Operating Humidity	10% to 80% Non-Condensing
Storage Humidity	5% to 90% Non-Condensing
Power Supply	DC Jack : 110 – 220V AC Power ; 12 VDC input. Screw Terminal Block : 12-60 VDC
Weight	282g
Dimensions (W x H x D)	9 x 2.5 x 11 mm
Material	IP50 Metal enclosure
Form Factor	Desktop & Wall Mount
Certification	FCC,CE, IP50 、 ROHS compliant

10. Thermal Line Receipt Printer Specifications

General Specifications	
Print Method	Thermal line printing
Print Speed	52mm/sec (14 lines/sec)
Print Life	50 Km
Interface Serial	D-Sub 25 pin female connector, 9600 bps baud-rate, none parity, 8 data bits and 1 stop bit, supports RTS/CTS & XON/XOFF protocol
Button	Feed: to feed roll paper
Print commands	ESC/POS print commands set
Print Font (ASCII Mode)	12 x 24 dots, 1.25mm(W) x 3.00mm(H)
Print Font (Graphic Font)	24 x 24 dots, 3.00mm(W) x 3.00mm(H)
Print Resolution	384 dots/line or 8 dots/mm
Print Font Character Support	International English Font, Big 5 Chinese Font

(13)

Character Per Line	32 (Font A)
Effective Print Width	48mm
Paper Width	57.5mm± 0.5mm
Paper Roll Diameter	50mm
Paper Thickness	0.06~0.08mm
Print Command	ESC/POS print commands set
Paper End Detection	Yes
Over-Heat Halt-on Protection	Yes (60°C)
LED	Power: shows power on/off status Error: indicate the printer error Paper: indicate out of paper or printer cover is not close properly
Environmental & Mechanical Characteristics	
Operating Temperature	0 °C ~ 45 °C
Storage Temperature	-10 °C ~ 50 °C
Operating Humidity	10% to 80% Non-Condensing
Storage Humidity	10% to 90% Non-Condensing
Power Supply	DC Jack : 100 – 240VAC Power ; 8.4 VDC /3A input.
Weight	760g
Dimensions (W x H x D)	112 x 91 x 185 mm
Certification	FCC, CE, ROHS compliant

11. Companion Product (Access Gateway) :

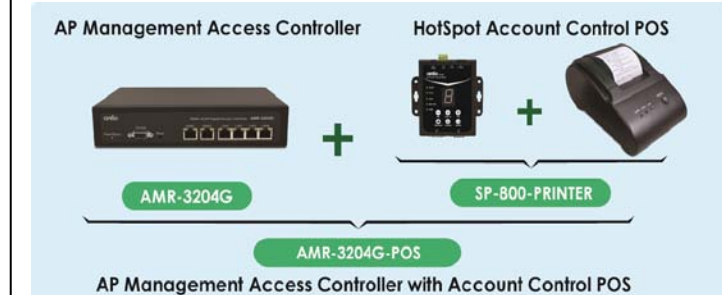
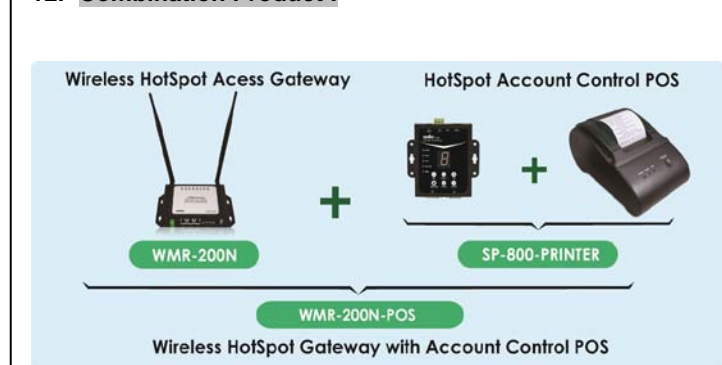


WMR-200N :
2WAN 11n High Power 300Mbps Wireless

AMR-3204G :
2WAN 4LAN Giga Management Access Controller

(14)

12. Combination Product :



Cerio Corporation
E-mail: support@cerio.com.tw
TEL: +886-2-8667-6160 #222
Web Site: www.cerio.com.tw

(15)