

ANT-23AD

5GHz 2x2 Outdoor Directional 23dBi with RF Cables Panel Antenna

EAN Code : 4712757159868



Introduction

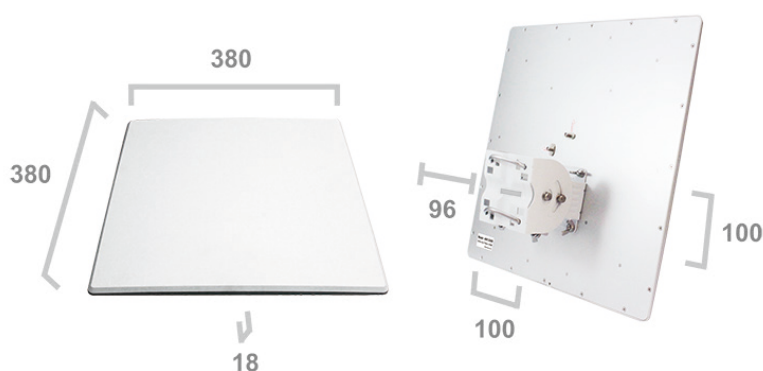
ANT-23AD 5GHz 2x2 Outdoor Directional 23dBi with RF Cables Panel Antenna provides 10° for H Plane and 10° E Plane long distance coverage for point to point application. **The ANT-23AD** supports 5.1 to 5.9 GHz and provides superb performance in IEEE 802.11a/an/ac/ax Wi-Fi environment. **ANT-23AD** supports pole and wall mounting installation. All materials are considered good in water tightness and prevention of rust characteristics. All CERIO products pass a strict test, and satisfy professional user product needs.

The ANT-23AD 5GHz 2x2 outdoor directional Dual Polarization Panel Antenna provides polarized dual-signal characteristics, allowing multiple antenna applications for 11ac/ax 2T2R MIMO. The user only uses one set of ANT-23AD Dual Polarization antenna with 2 sets of SMA connectors for connection with NFC-NSP-1M low-attenuation RF cables to complete 11ac 2T2R MIMO applications that require multiple antennas. The perfect solution for faster, longer distances with 11ac 2T2R MIMO multi-radio reception and wireless transmission.

Highlight Features

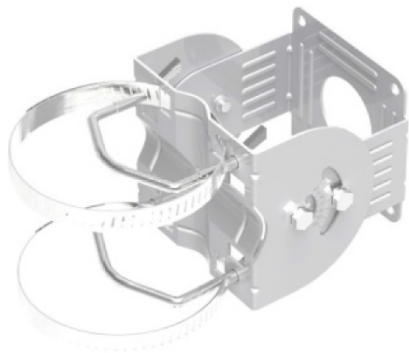
- Supports 5Ghz IEEE 802.11a/an/ac/ax.
- High Gain: 23dBi.
- 10°Width-E Plane and 10°Width-E Plane coverage.
- High performance.
- Light-weight and easy installation.
- IP67 Waterproof design.
- 0-45° Up and 0-38° Down adjustable design
- Supports two SMA (Female) connectors.
- Supports pole & wall mounting.
- Bundle with RF cable with a waterproof cap and adjustable pole & wall mounting kit.

Hardware Overview / Dimension



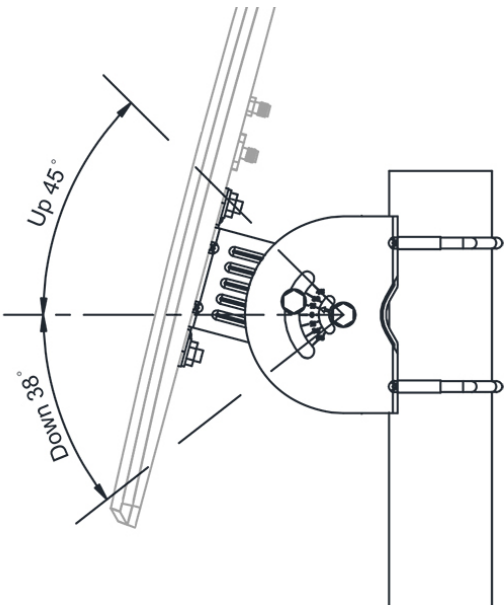
Main Unit Dimension : 380 * 380 * 18mm (L x W x H)
Mounting Bracket : 100 * 100 * 96 mm (L x W x H)
Weight : 1.54kg / 1.99kg (Including bracket)

Adjustable Pole Mounting Installation Kit

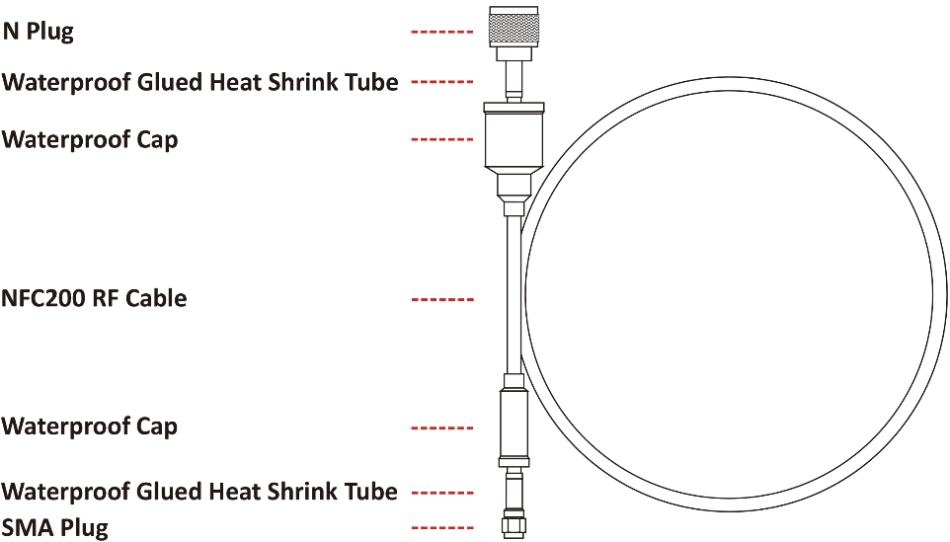


Support Vertical or Horizontal Pole Installation
Pole U and O-Clamps: Pole Range Ø40-Ø100mm

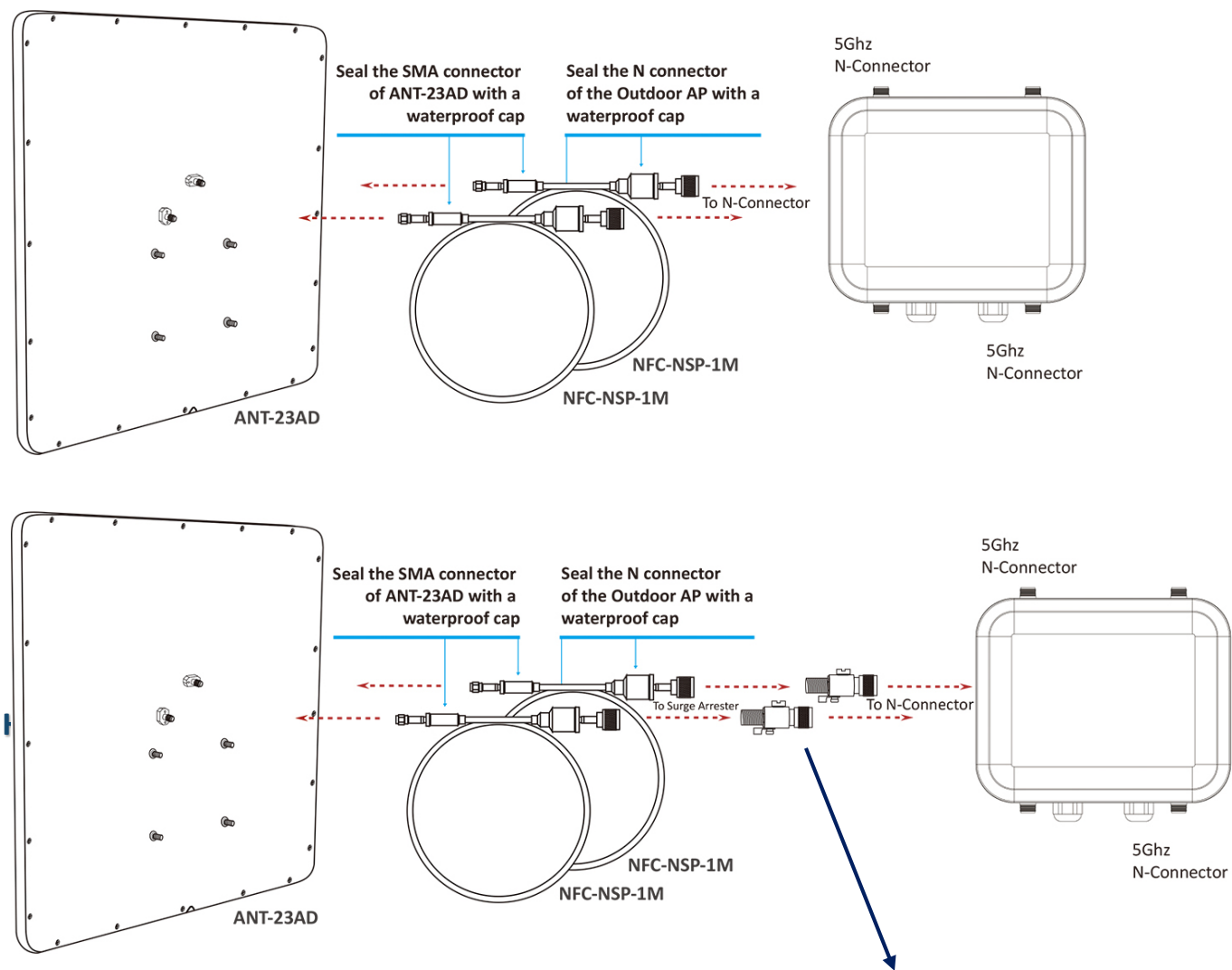
Pole Mounting



RF Cable Overview (NFC-NSP-1M)

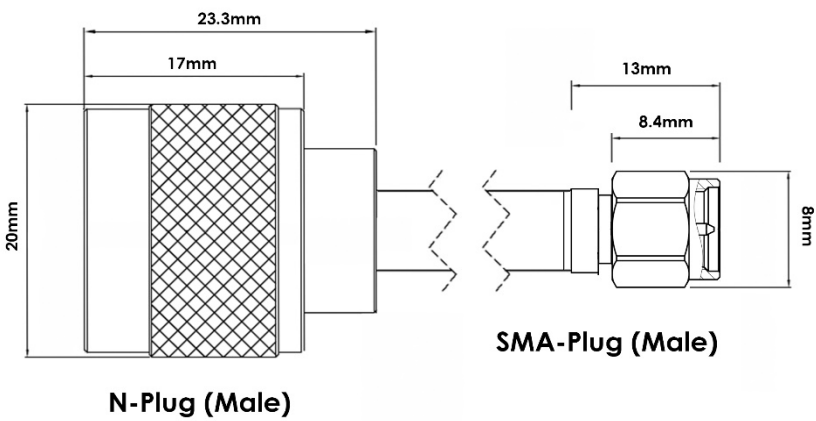


Installation Application



Installation with Lightning Protector
(Optional: Model No. LP-300)

N to SMA Connector



Specifications

Antenna Type
Outdoor Directional Dual Polarization Panel Antenna
Frequency Range
5.1 ~ 5.9GHz (11a/an/ac/ax)
Network Specification
Wireless 5Ghz Network IEEE 802.11a/an/ac MIMO
Antenna Gain
23dBi
V.S.W.R
≤ 2.0
Beam Width-H Plane
10°
Beam Width-E Plane
10°
Polarization
Vertical & Horizontal (Linear)
Front-Back Ratio
> 25 dB
Input Impedance
50 Ohms
Connector
SMA Female
x2

Form Factor
Supports Wall / Pole Mounting Installation
Pole U and O-Clamps: Pole Range $\varnothing 40\text{-}\varnothing 100\text{mm}$
Adjustable range
0-45° Up and 0-38° Down adjustable design
Rated Wind Velocity
210Km / Hour
Operation Temperature
-50°C - + 85°C
Storage Temperature
-50°C - + 85°C
Humidity
5~90% maximum (non-condensing)
IP Rating
IP67(waterproof level)
Dimension
Antenna: 380*380*18 (L x W x H)mm
Mounting kit: 100*100*96 (L x W x H)mm
Weight
Antenna: 1.54kg
Antenna with mounting kit: 1.99kg
Production Location
TW Only

Package Contents

Package Contents
ANT-23AD Main Unit
Adjustable Pole & Wall Mounting Kit
RF 1Metter Cables (NFC-NSP-1M)
Quick Installation Guide
Warranty Card