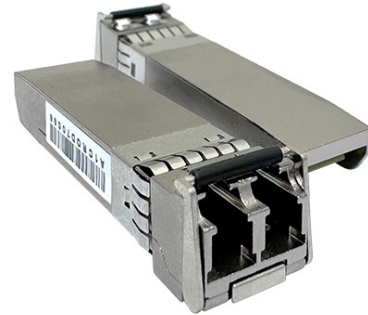


SLC-10GSRM

10GBASE-SR SFP+ 850nm LC Multi-Mode DDM (300M)

EAN Code : 4712757151152



Introduction

The **CERIO 10GBASE-SR SFP+/LC Multi-mode fiber module** provides optical transceiver modules connect on switches SFP+ Slot ports, supporting LC connectors. This dual-core small form-factor pluggable (SFP) module supports hot-swappable design and can be applied to long-distance fiber optic networks or fiber connections to other computer servers that support 10Gigabit SFP+ ports between 10Gigabit SFP+ ports of network switches. The module operates on a single power supply voltage of 3.3V and supports **10Gbps Ethernet transmission capability**.

The **Cerio SFP+ fiber module** complies with the IEEE 802.3ae 10Gigabit Ethernet standard, providing a stable and high-speed fiber network environment. When paired with fiber optic cables, this module can support fiber optic connections up to a **maximum distance of 300 meters**. It can be used in various application scenarios that require high-speed, reliable, and long-distance fiber transmission, and has broad application value.

Highlight Features

- Complying with IEEE 802.3az 10Gigabit Ethernet Standard.
- Compliant with SFP Multi-Source Agreement (MSA).
- Supports 10Gbps Ethernet transmission capability.
- Built in DDM, Digital Diagnostic Monitor function.
- Center Wavelength supports 850nm.
- Supports fiber link for distances up to 300 meters.
- Low power consumption less than 0.9W.
- Single power supply 3.3V.
- Hot-pluggable remove and install module.
- Duplex LC connectors.
- RoHS compliant.
- Plug and play, easy installation.

Specifications

Fiber Type	Multi-Mode
Data Transfer Rate	10Gbps
Maximum Fiber Distance	300M
Center Wavelength	850nm
Transmitter/Receiver	VCSEL / PIN
Supply Voltage	3.3V
Power Consumption	< 0.9W
Connector	Dual LC connectors
Digital Diagnostic Monitor (DDM)	Supported

Operating Temperature	0°C ~ 70 °C
Storage Temperature	-40 °C ~85 °C
Dimension (W x H x D)	13.4 x 12.22 x 55.45 mm
Weight	18.6g
Production Location	TW
Certifications	RoHS compatible

Package Contents

Contents		
SLC-10GSRM Main Unit		x1
Warranty Card		x1

1.25Gbps/Gigabit SFP Series

Model No.	Description	Compatible Switch
SRJ-GT	1000BASE-T SFP Copper RJ45 Transceiver 100m	CS-1224G CS-2424G
SLC-10GSRM	1.25Gbps SFP SX 850nm 550m LC Multi-Mode DDM	CS-2208G-8P CS-2424G-24P
SLC-GLXS10	1.25Gbps SFP LX 1310nm 10KM LC Single-Mode DDM	CS-3416G-16P CS-3424G-24P

10Gbps SFP+ Series

Model No.	Description	Compatible Switch
SRJ-10GT	10GBASE-T SFP+ Copper RJ45 Transceiver 30m	
SLC-10GSRM	10GBASE-SR SFP+ 850nm 300m LC Multi-Mode DDM	CS-2648XG CS-2648XG-48P
SLC-10GLRS10	10GBASE-LR SFP+ 1310nm 10KM LC Single-Mode DDM	
AOC-10G01	1M 10GBASE-T SFP+ to SFP+ Active Optical Cables Cable	