



WiFi6 802.11ax AX3000 Dual-Radio High Power Outdoor PoE Bridge/AP

CERIO's Outdoor PoE Bridge/AP using the new generation of WiFi6 (802.11ax) dual-core 1Ghz high-computing processing chip with the **latest MU-MIMO and OFDMA technology** provides higher efficiency and transmission speed. It's a WiFi6 11ax 2.4/5GHz dual-band wireless AP and supports a **maximum transmission rate of up to 2400Mbps on 5GHz frequency and a maximum transmission rate of up to 574Mbps on 2.4GHz frequency**. It's an AX3000 model that can simultaneously provide wireless signals in the 2.4GHz and 5GHz frequency bands.

WiFi6 11AX

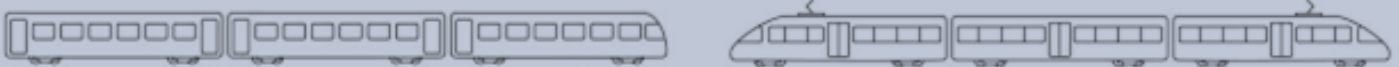
DUAL POE PORTS

2 ETHERNET PORTS

IP67 WEATHER-PROOF



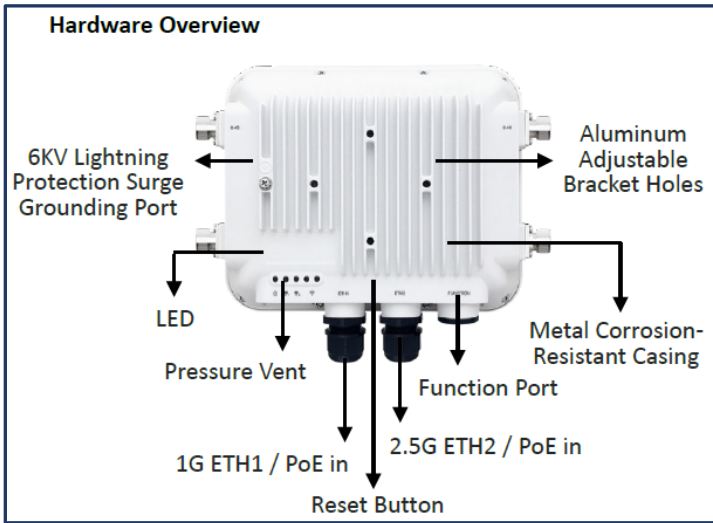
CERIO MOBILE WIRELESS NETWORK



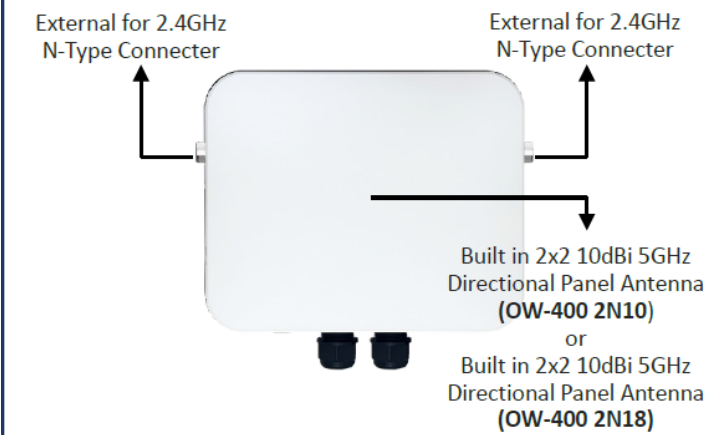
- ✧ Supports 2.4GHz/5GHz dual-band and the maximum transmission rates are 574/2400 Mbps respectively while operating up to 2974Mbps.
- ✧ **Aluminum casing design** help to achieve optimal heat dissipation in hot outdoor environments, ensuring the device maintains the best transmission performance at all times.
- ✧ **Supports the latest 11ax Low-Density Parity-Check (LDPC) function**, which can efficiently perform error correction and supports Space-Time Block Coding (STBC), Transmit Beamforming (TxBF), which can enhance signal coverage and improve wireless transmission performance.
- ✧ Supports **one Gigabit and one 2.5Gigabit ETH port, both support PoE power input**.
- ✧ CenOS 5.0 Control Access Point Mode supports **centralized management of up to 32 APs**.
- ✧ **Supports IP67 weather-proof durable design and Pressure vent**.
- ✧ Supports **6KV lightning protection** and hardware reset button to factory default.
- ✧ Supports **Adjustable Wall and Pole Mounting Installation**.



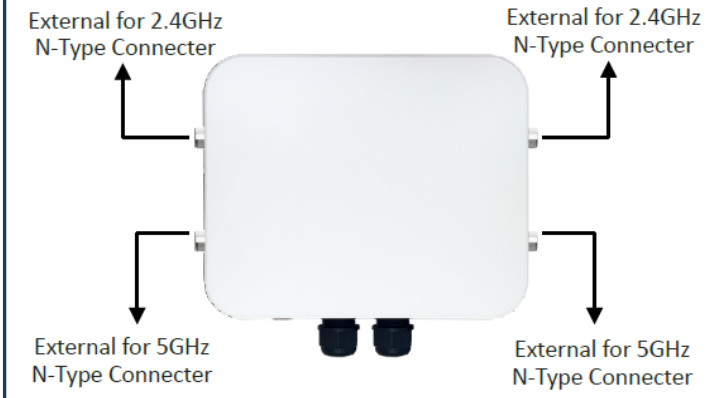
Hardware Overview



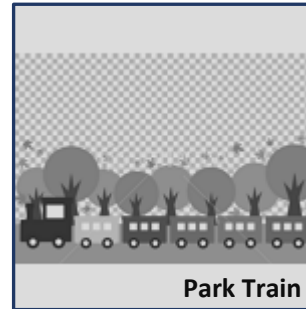
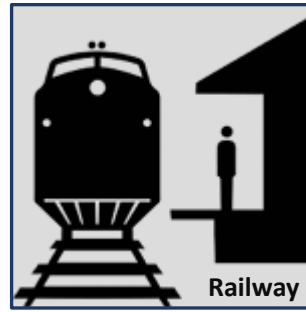
OW-400 2N10 / OW-400 2N18 Antenna Overview



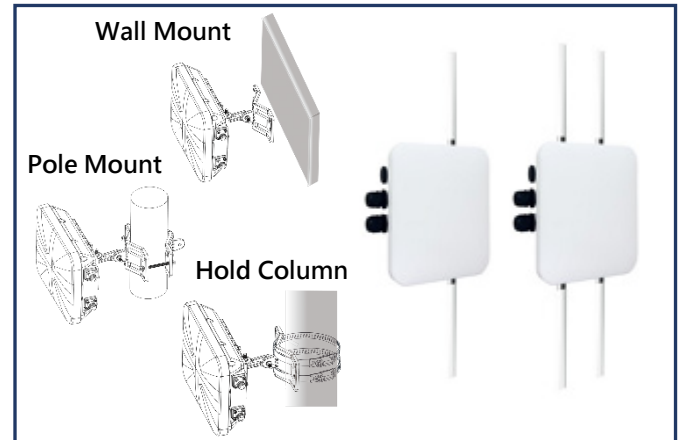
OW-400 4N00 Antenna Overview



Mobile Client Bridging/WISP Roaming Applications



Installation Applications



For more detailed product information, please visit our official [CERIO website](http://www.cerio.com.tw), [Facebook](#), or contact our international sales team at issales@cerio.com.tw.

More detailed information :
• [Outdoor AP/Bridge](#)

