

產品介紹

CERIO

**Gigabit PoE 直通乙太網路
突波疏導保護器**

www.cerio.com.tw

資訊綱要



產品主要功能特色	3
硬體介紹	4
IP68 防水防護等級	7
產品安裝	8
線對地和線對線ESD保護能力	10
產品應用	11
突波測試報告	12
資訊服務	15
技術客服聯絡方式	16

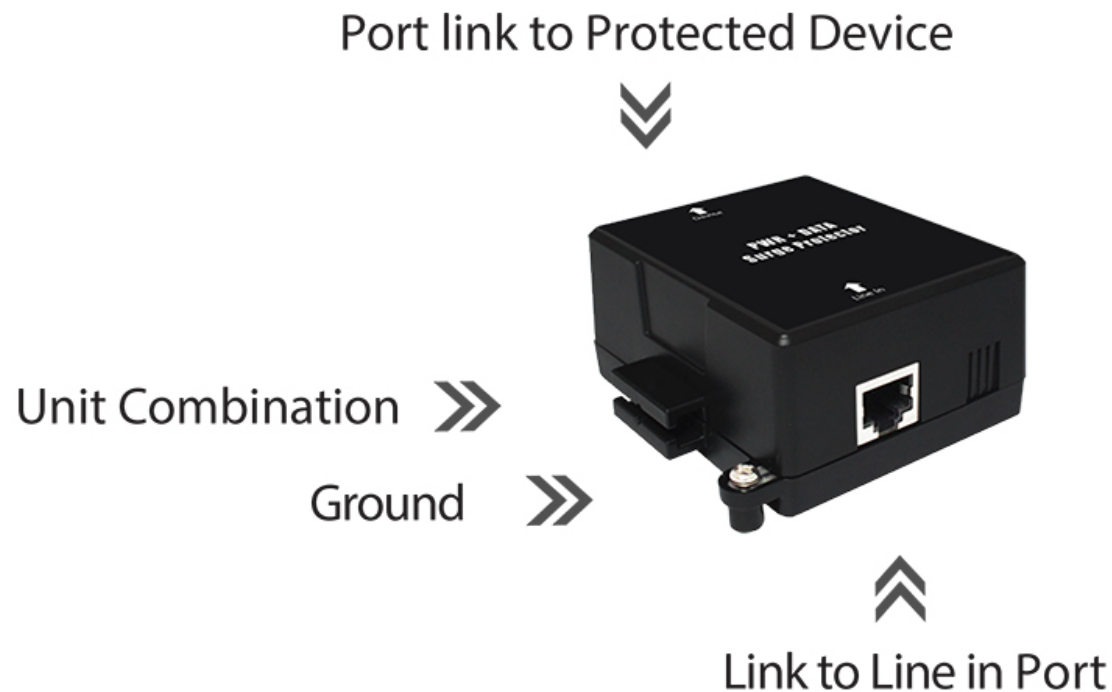
產品主要功能特色

- ✓ 符合 IEEE 802.3 10Base-T, IEEE 802.3u 100Base-TX, IEEE802.3ab 1000Base-T, IEEE-802.3at PoE+ / 802.3af PoE等標準規範。
- ✓ 支援Gigabit 10/100/1000Mbps 網路標準。
- ✓ 可保護任何 Power-over-Ethernet (PoE) 或 non-PoE 設備。
- ✓ 負荷電流自我保護機制與接地線功能且機板內建脈衝放電電流等保護設計。
- ✓ 內建金屬接地功能，外部螺絲方便連接接地線，確實接地後最高**具有10 kA 脈衝放電電流的保護能力**，輕易完成可靠的突波保護。
- ✓ **支援兩種保護模式**：線對地和線對線可調節功率輸出避免損壞連接的設備。
- ✓ 可保護乙太網路電纜的所有8個引腳。
- ✓ 包裝內附18AWG 接地線供安裝時接地使用。
- ✓ 即插即用，無需任何軟體配置。
- ✓ 支援壁掛安裝，讓使用者架設更方便。
- ✓ 提供**IP68防水防護等級**且耐用的鋁擠金屬外殼設計，非常適合在戶外網路境應用中進行佈署。(POE-OSP)





**室外型
POE-OSP**



**室內型
POE-ISP**

CERIO 室內型突波疏導保護器，提供隨插即用不需任何軟體配置，設計輕巧且極具成本效益之附加效益，且方便於網路規劃以及產品可靠性高。

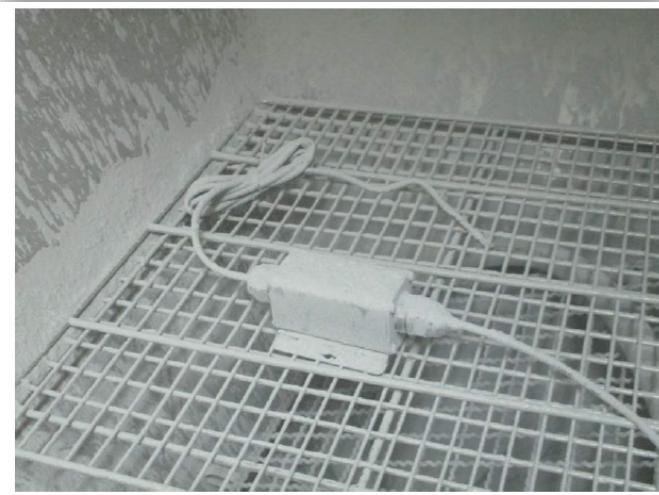


堅固耐用鋁擠金屬外殼設計

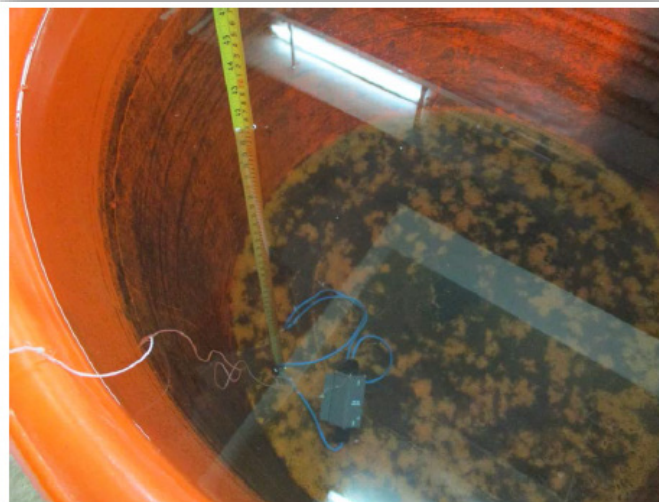
CERIO 室外型突波疏導保護器，採用IP68防水防護等級及高可靠度的耐用鋁擠金屬外殼設計，可承受戶外惡劣環境的網路佈署，非常適合戶外網路環境的防突波應用與佈署。



IP68 防水防護等級測試報告



IP6X Test
Accordance with IEC60529
13.1, 13.4 and 13.6 test.
There is no trace of dust
inside.



IP6X Test
Accordance with IEC60529
13.1, 13.4 and 13.6 test. No
ingress of water was found
inside.



ELECTRONICS TESTING CENTER, TAIWAN
ADDRESS: NO.5 HSIN HO 2 RD., AN PIN INDUSTRIAL PARK,
TAINAN, TAIWAN
TEL:06-2925787 FAX:06-2650302
<http://www.etc.org.tw>



Ind. Ser. No. : 20-03-NEF-001
Issue Date : 2020 / 3 / 5

TEST REPORT

Ind. Ser. No.	: 20-03-NEF-001
Applicant	: Cerio Corporation.
Address	: 4F.-3., No.192, Sec. 2, Zhongxing Rd., Xindian Dist., New Taipei City 231, Taiwan (R.O.C.)
Products	: Gigabit Ethernet POE Outdoor Surge Protector Main: POE-OSP Series: NOSP · SP-OD10 · PSP-10 · POE-01SP · GPOE-S01 · OPOE-SP-1 · OD-PSP10 (The appearance and structure of the main test and series models are the same, only the models are different)
Model	: OPOE-SP-1 · OD-PSP10 (The appearance and structure of the main test and series models are the same, only the models are different)
Quantity	: 2sets
Date of Receipt	: 2020 / 3 / 2
Date of Testing	: 2020 / 3 / 2 ~ 2020 / 3 / 3
Test specification	: IEC60529 Edition 2.2 2013-08 Electronics Testing Center, Taiwan – Southern Taiwan
Inspection Site	: Industry Service Department (TAF Certification No:1161) IP6X Temp. 26 ± 2 °C, R.H. 43 ± 6 %, Air pressure 101.3 kPa ± 5 %
Ambient Environment	: IPX8 Temp. 25 ± 2 °C, R.H. 50 ± 6 %, Air pressure 101.4 kPa ± 5 %
Testing Item	: IP68
Test condition	: See the following sheets
Test result	: PASS



The test results relate only to the items tested.

The report shall not be reproduced except in full without the written approval of Electronics Testing Center, Taiwan.

This inspection has carried out to the best of our knowledge and ability, and our responsibility is limited to the exercise of reasonable care, this certification is not intended to believe the sellers from their contractual obligations.

Tested by : Yu Bin Qiu 2020.03.05 Approved by : Kevin Lee 2020.03.05

Southern Taiwan Industry
Service Department

Southern Taiwan Industry
Service Department

接地線安裝



室外型

壁掛安裝

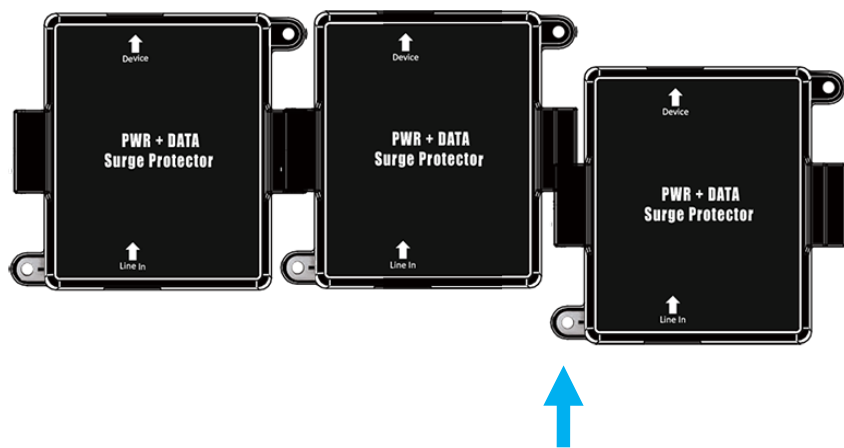
Wall Mounting



壁掛安裝

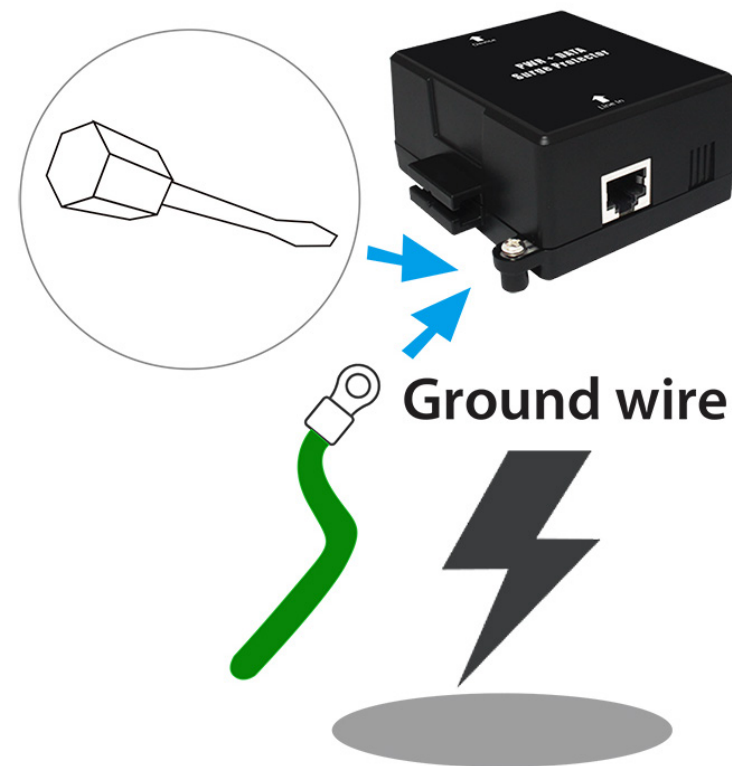


多台串接組合

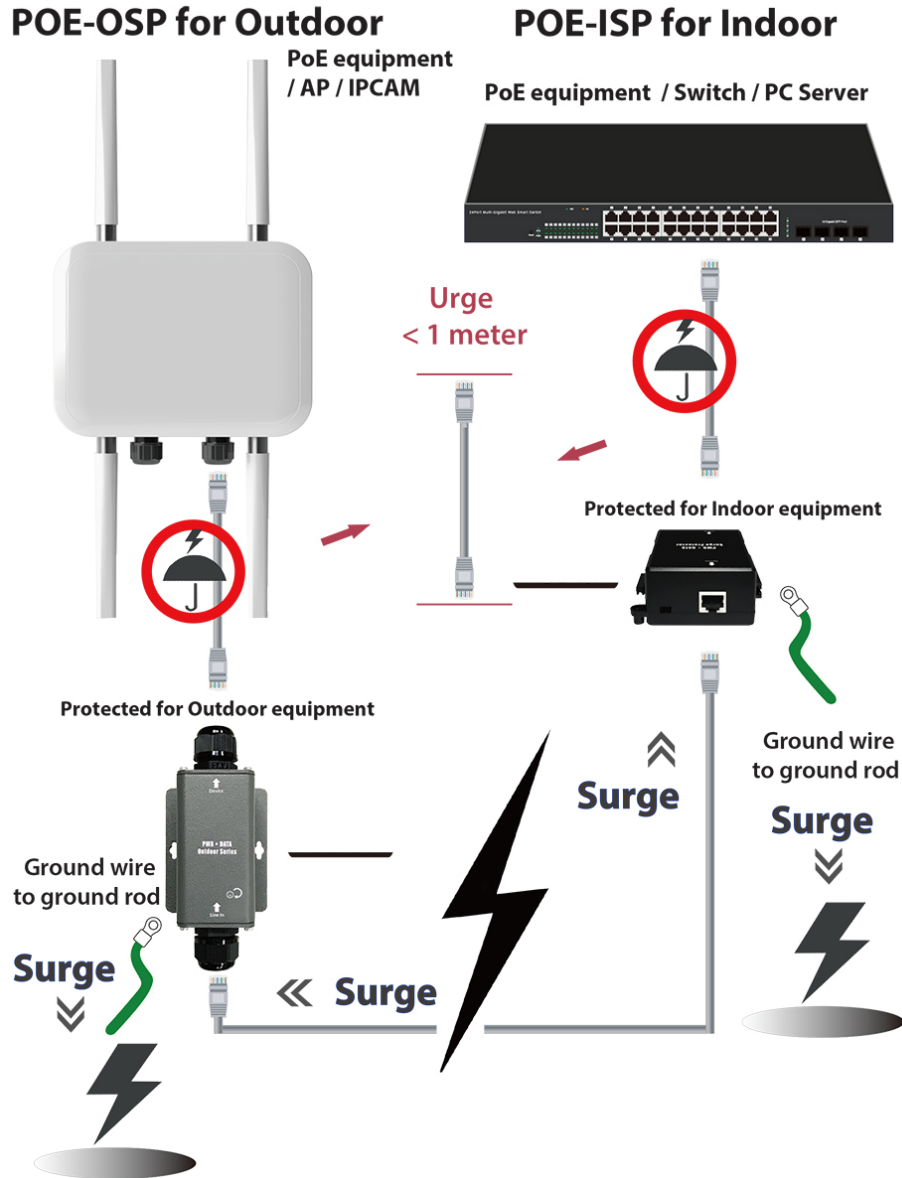


室內型

接地線安裝



線對地和線對線ESD保護能力

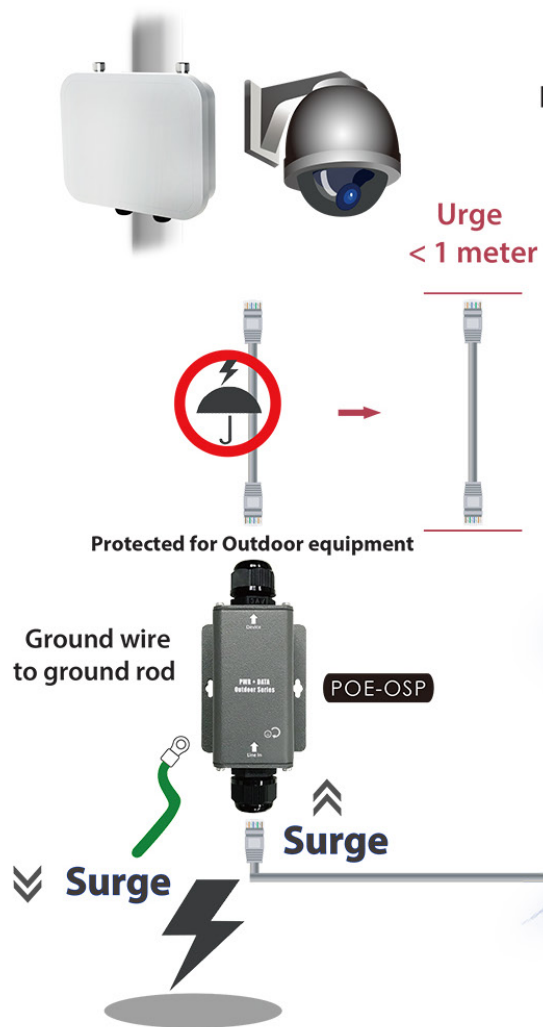


CERIO 突波疏導保護器可對在乙太網路的 PoE設備及非PoE設備於Gigabit網路傳輸時 提供卓越的閃電和雷擊等防突波保護

於網路設備的兩端安裝突波疏導保護器，一端連接終端設備(如PoE或非 PoE之室外型攝影機、無線基地台等)，另一端連接來源設備(如PoE或非 PoE之 網路交換器、路由器等)，藉由連接接地線將電壓電湧疏導於地，對於昂貴的網路設備提供了雙向防雷電保護措施，是一款高經濟效益的戶外防突波解決方案。

POE-OSP for Outdoor

PoE equipment / WiFi AP / IPCAM



Lightning Strike

Urge
< 1 meter

Protected for Outdoor equipment

Ground wire
to ground rod

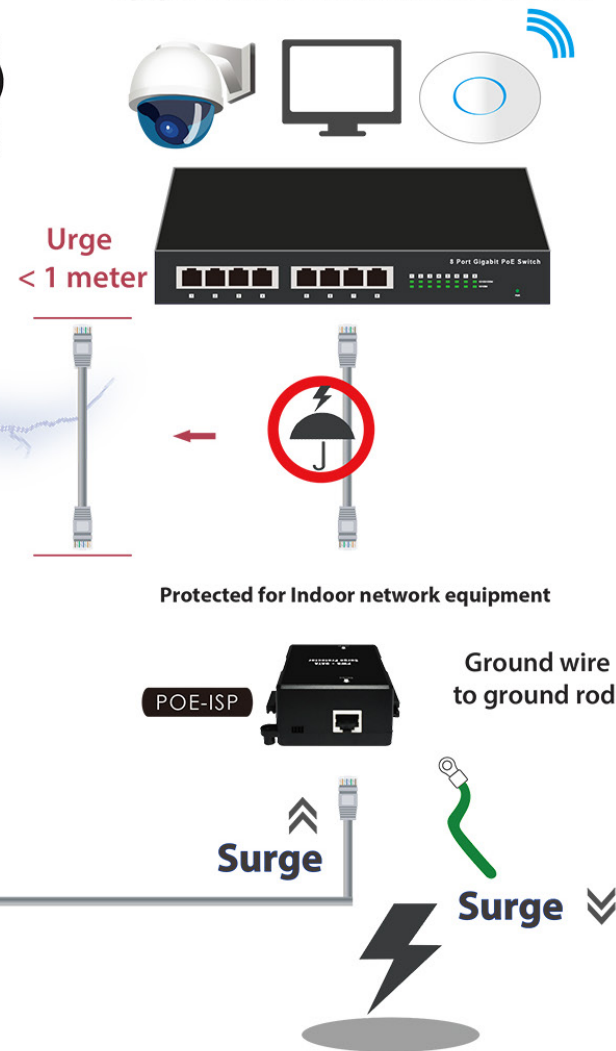
POE-OSP

Surge

Surge

POE-ISP for Indoor

Equipment for PoE Switch / WiFi AP / IPCAM



Urge
< 1 meter

Protected for Indoor network equipment

POE-ISP

Ground wire
to ground rod

Surge

Surge

相容於 IEC/EN 61000-4-5 (EMC) 測試規範

PORT TYPE	STANDARD	WAVEFORM	CONDITION
POE Port	IEC-61000-4-5	10/700us	L-G +/-6KV, L to L +/-6KV.



ITEM (1) TEST RESULT

PORT TYPE	TEST CONDITION	RESULT	NOTE
POE Port	10/700us L to GND +/- 6KV 18Ω 331A	Pass	All pin to GND
POE Port	10/700us L to L +/- 4KV 40Ω 100A	Pass	pin1 to pin2/pin3 to pin6 pin4 to pin5/pin7 to pin8
POE Port	10/700us L to L +/- 6KV 40Ω 150A	Pass	

相容於 IEC/EN 61000-4-5 (EMC) 測試規範

PORT TYPE	STANDARD	WAVEFORM	CONDITION
POE Port	IEC-61000-4-5	1.2/50us	L to GND 3KV /4KV L to L 2KV

ITEM (2) TEST RESULT

PORT TYPE	TEST CONDITION	RESULT	NOTE
POE Port	1.2/50us L to GND 3KV 2Ω 1.5KA	Pass	Pin1/ pin2 to GND Pin3/pin6 to GND Pin4/pin5 to GND Pin7/pin8 to GND
POE Port	1.2/50us L to GND 4KV 2Ω 2KA	Pass	
POE Port	1.2/50us L to L 2KV 2Ω 1KA	Pass	pin1 to pin2/pin3 to pin6 pin4 to pin5/pin7 to pin8

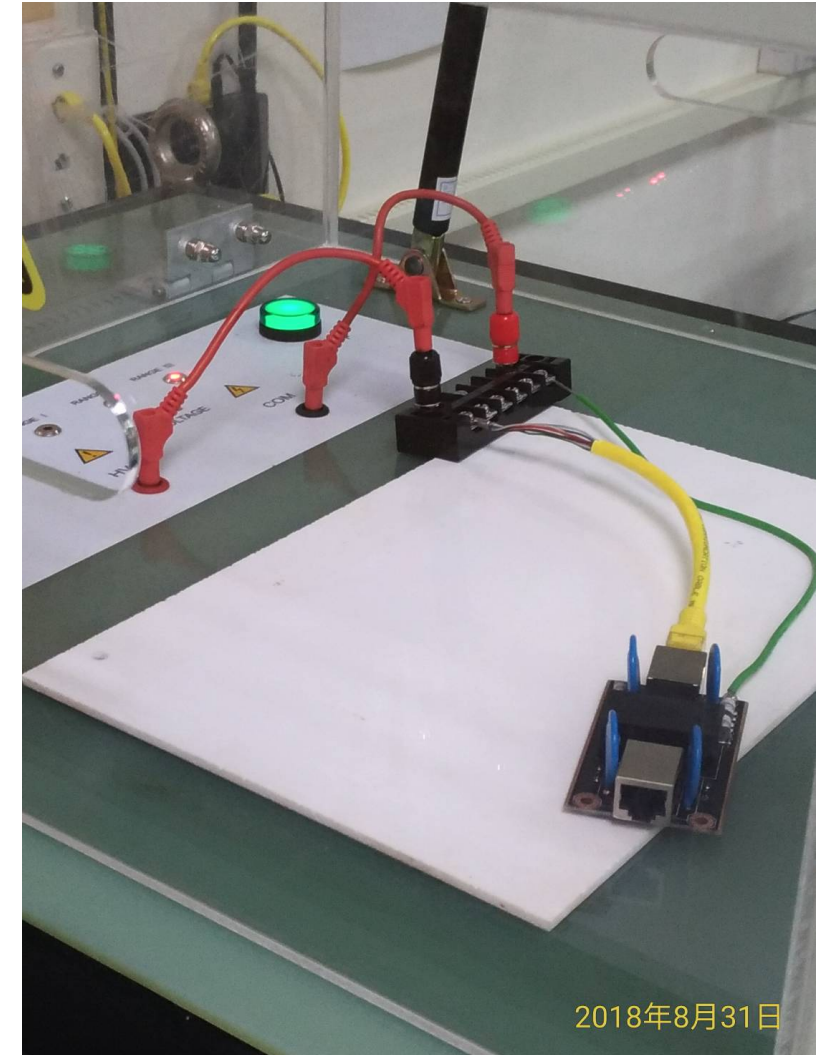


相容於 IEC/EN 61643-21 (Safety) 測試規範

PORT TYPE	STANDARD	WAVEFORM	CONDITION
POE Port	EN61643-21	8/20us	L-G 10KA

ITEM (3) TEST RESULT

PORT TYPE	TEST CONDITION	RESULT	NOTE
POE Port	8/20us L to GND 10KA	Pass	All pin to GND



資訊服務



發明 & 創新

智鼎資訊擁有堅強RD實力團隊並結合無線創新技術及理念以提供用戶及企業最佳的網路環境



無線解決方案

智鼎資訊擁有經驗豐富的韌體/硬體工程師及專業的業務團隊可針對飯店無線網路架設專案提供完美的解決方案 (如 飯店、長距離PTP 無線網路架設，學校, 政府單位等)



韌體研發技術

智鼎資訊專業團隊研發的韌體提供用戶高端技術及簡易操作介面，並支援集中控制AP管理軟體



專業客戶服務

智鼎資訊客服團隊提供專業技術諮詢及優質服務

技術客服聯絡方式

CERIO

智鼎資訊(股)公司
新北市新店區中興路二段192號4F-3
市話：+(886) 02-8911-6160
傳真：+(886) 02-8911-6180



www.cerio.com.tw



sales@cerio.com.tw



www.facebook.com/cerio.tw



www.linkedin.com/company/cerio-corporation



www.youtube.com/channel/UCejUL-o3rQavyItXEEMyK1A